

DISMANTLEMENT OF A GARMENT

RAINCOAT

URBAN

LARGE SIZE

SPORTWEAR

UNISEX

1980

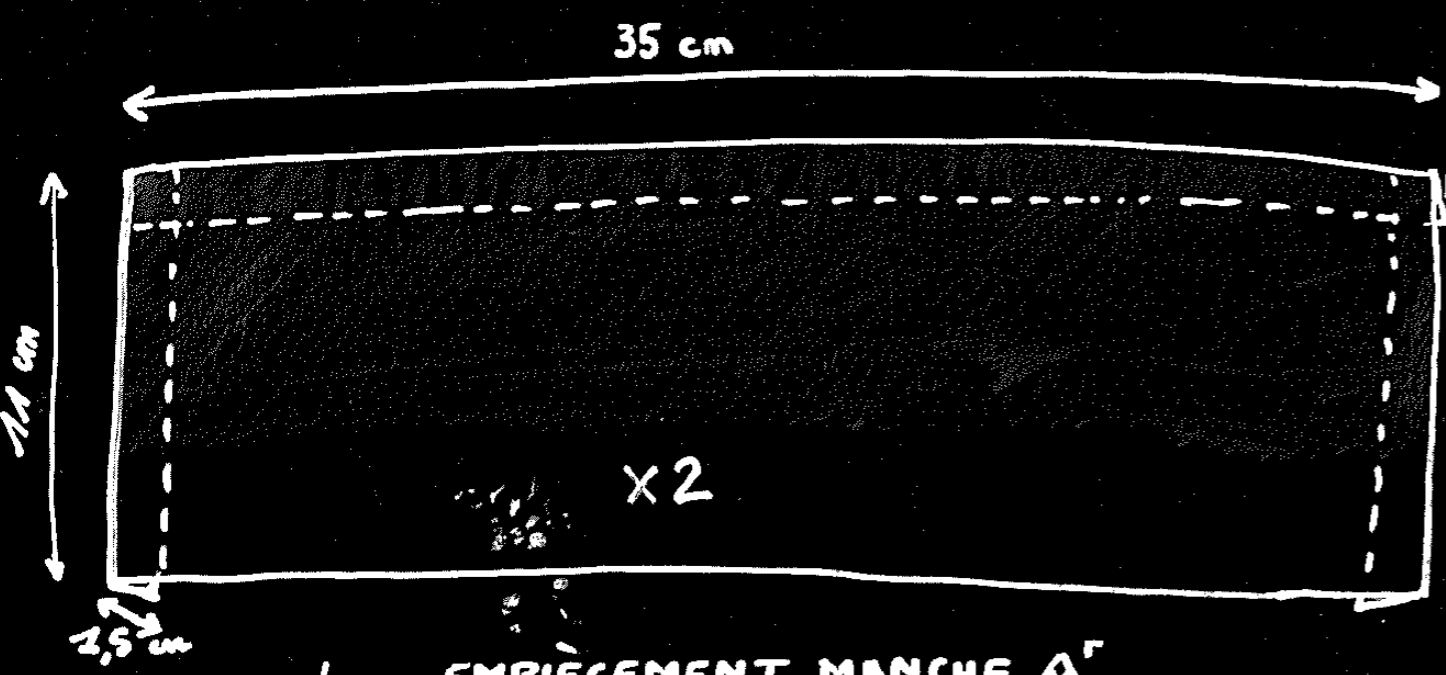
BI COLOR



INVENTAIRE DES FORMES

INVENTORY OF SHAPES

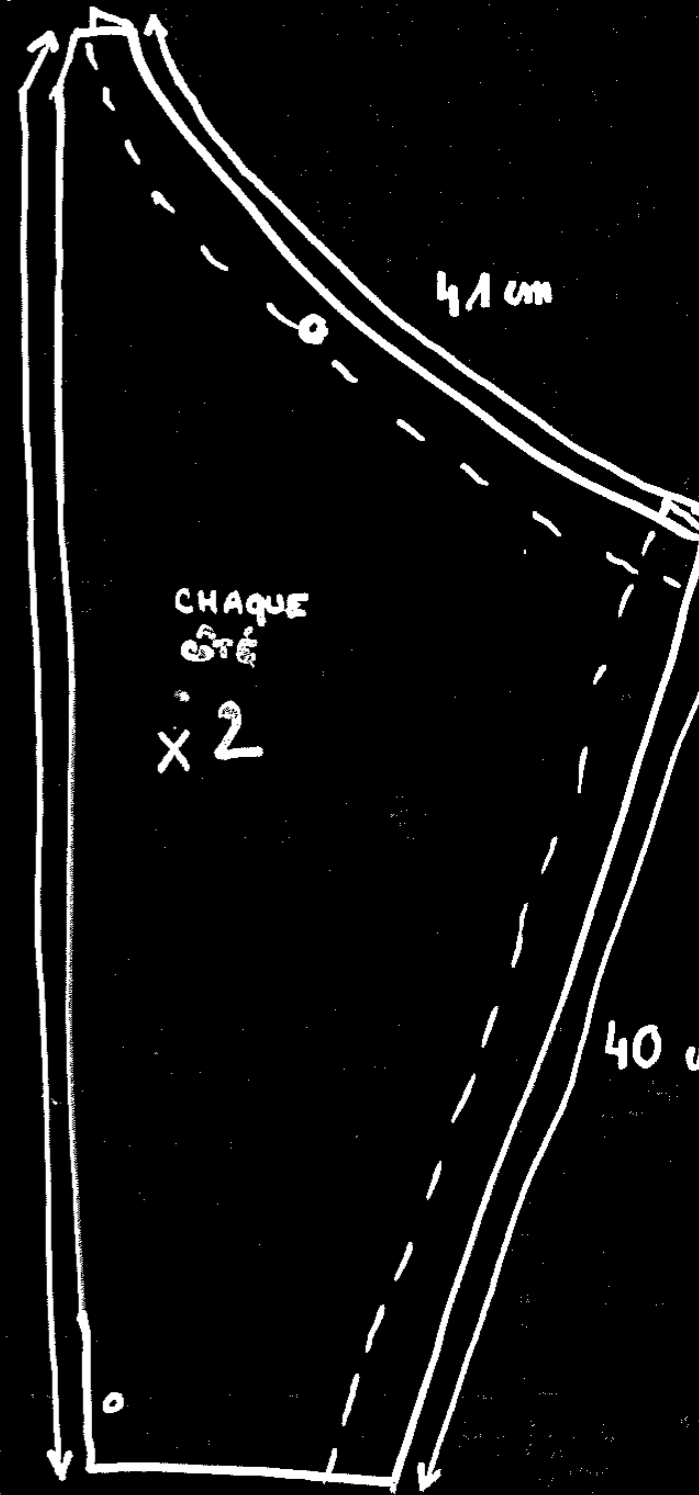
TECHNICAL DATA SHEET



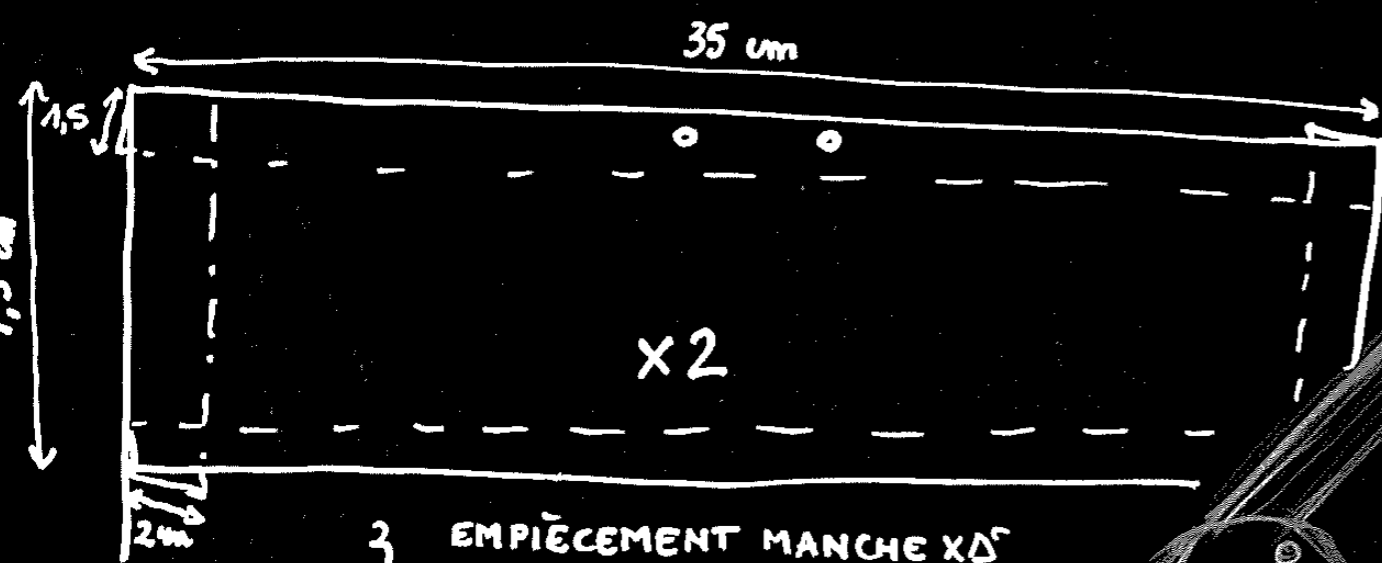
4. EMPIÈCEMENT MANCHE Δ^r
INSIDE SLEEVE YOKE

TIRE MARKS
WEATHER MARKS
TRANSPARATION MARKS

shoulder in
the same
piece 0.0

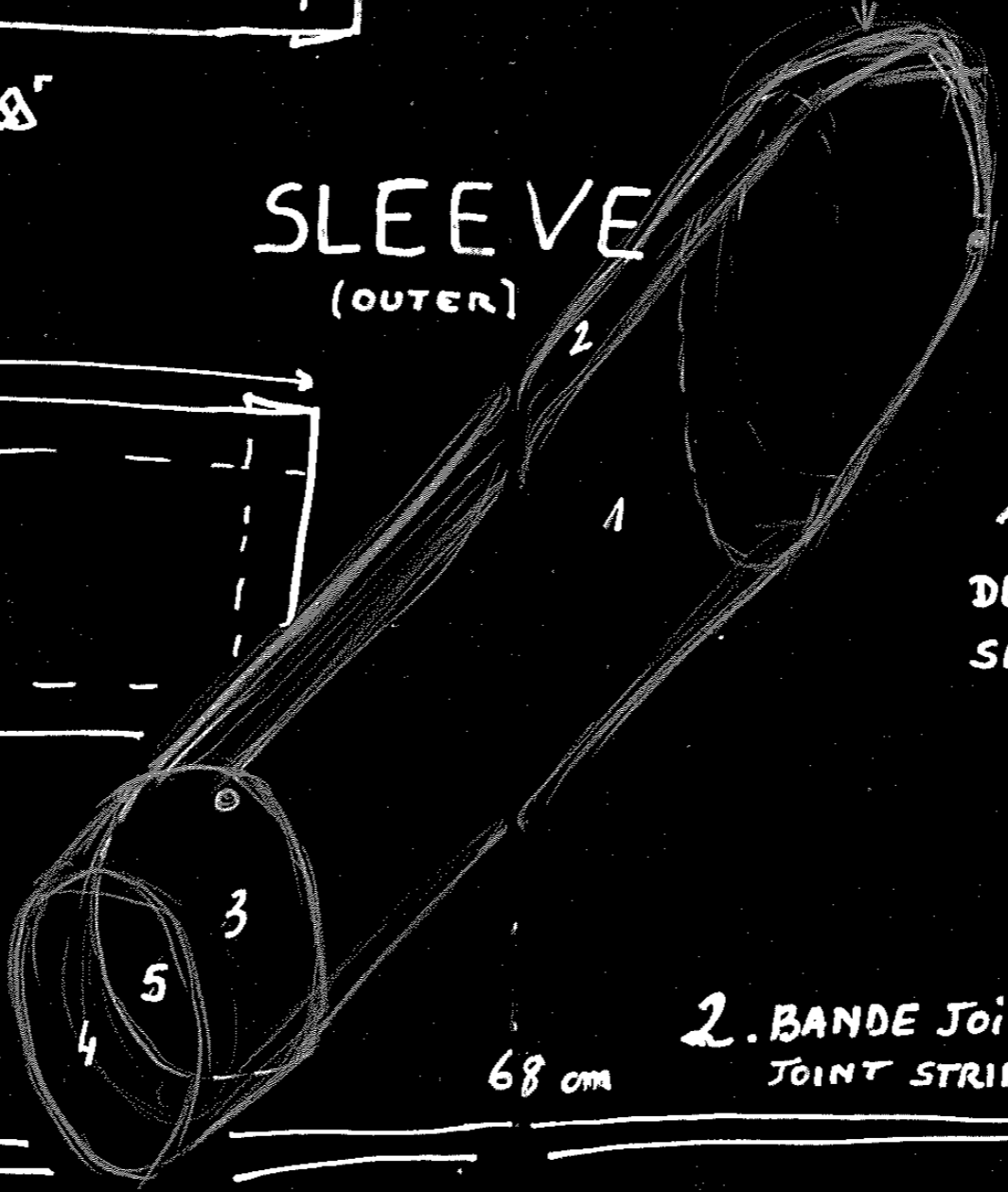


1 & 5. CÔTÉS
DES MANCHES
SLEEVE'S SIDES

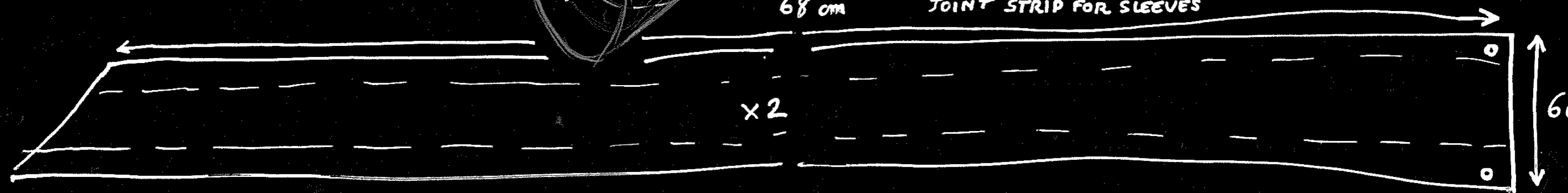


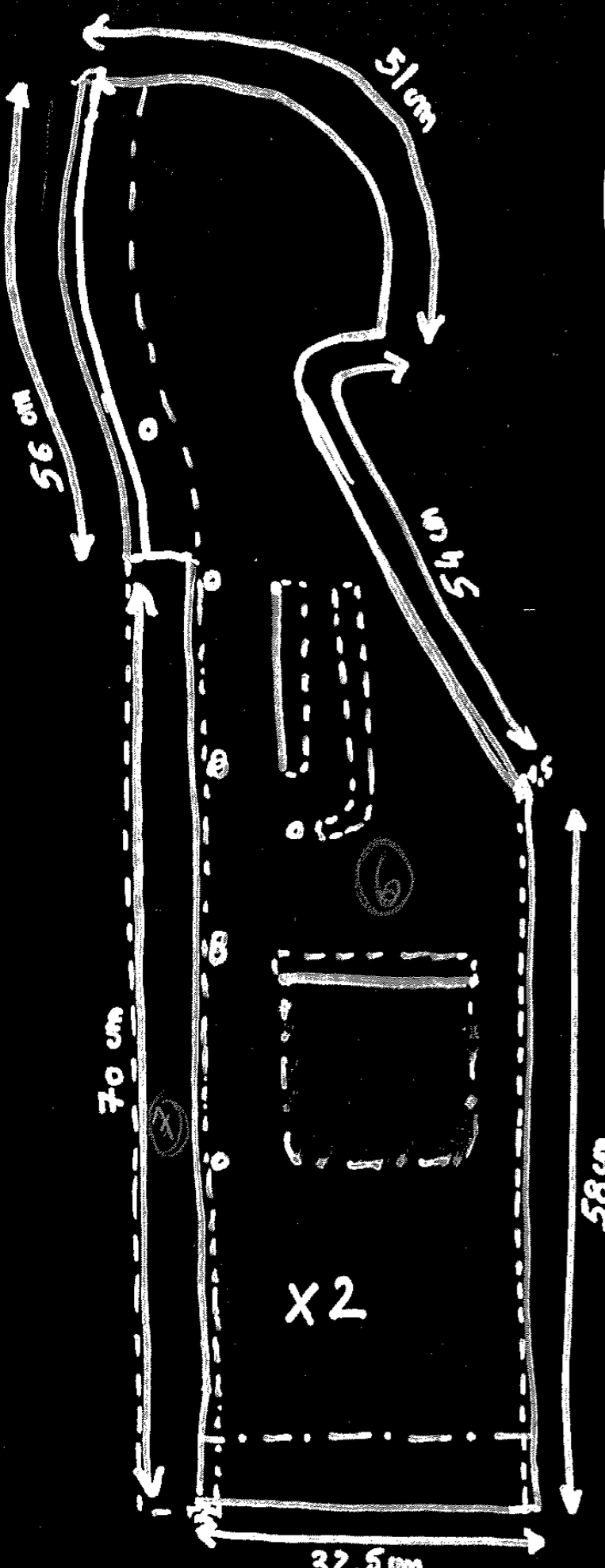
3. EMPIÈCEMENT MANCHE XΔ^r
OUTSIDE SLEEVE YOKE

SLEEVE
(OUTER)

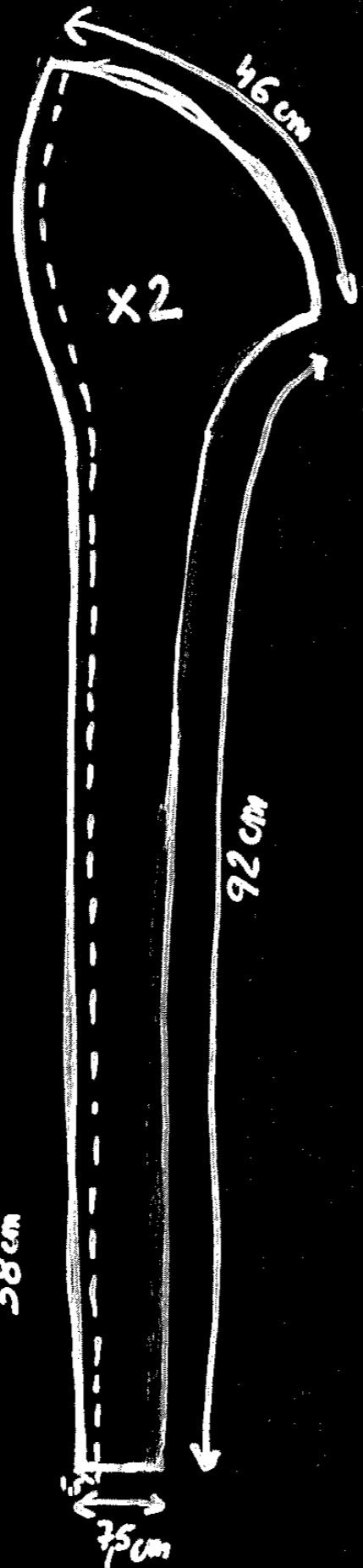


2. BANDE JOINTURE MANCHES
JOINT STRIP FOR SLEEVES



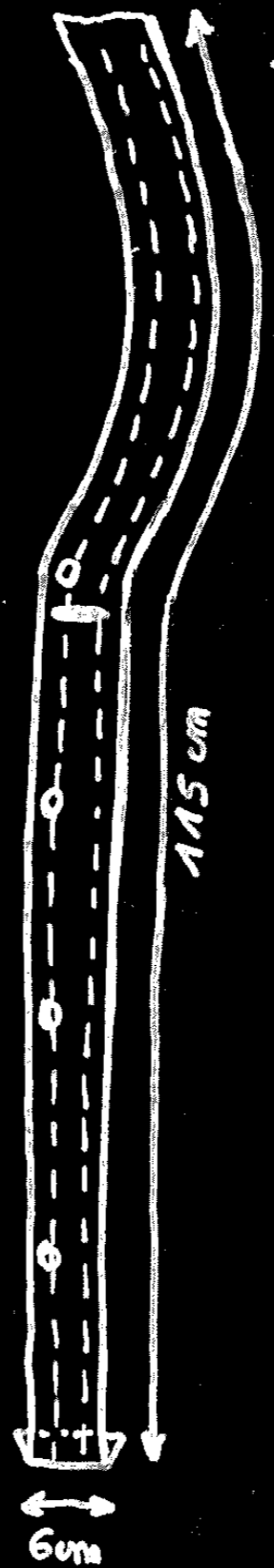
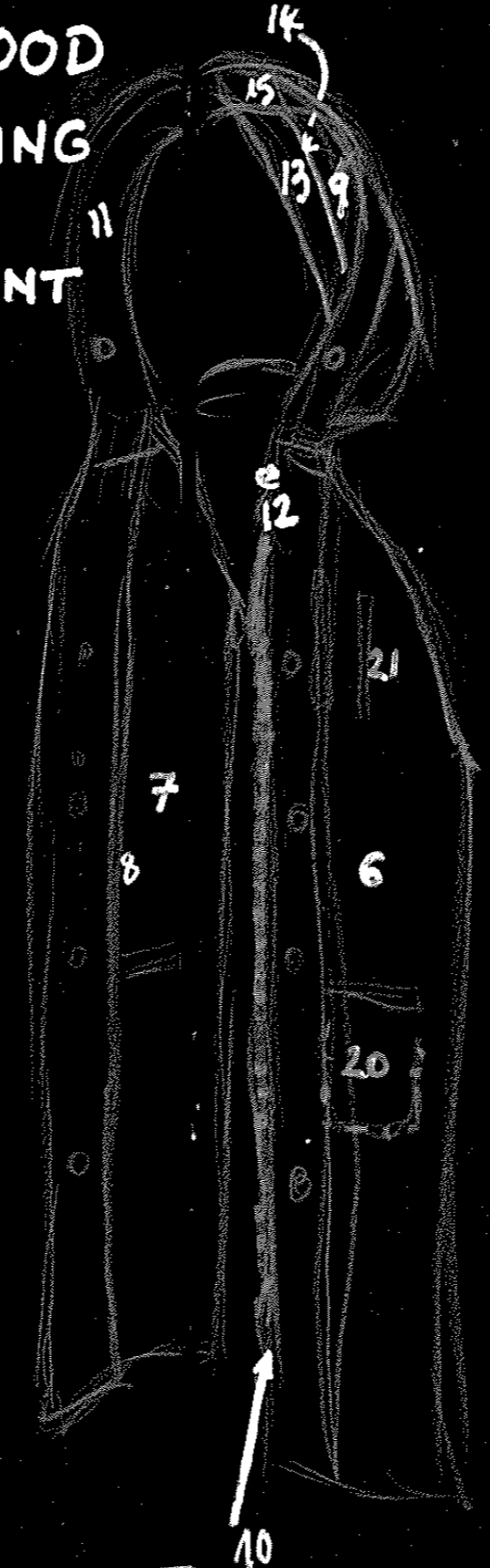


687. FRONT AND EXTREMITIES OF THE HOOD



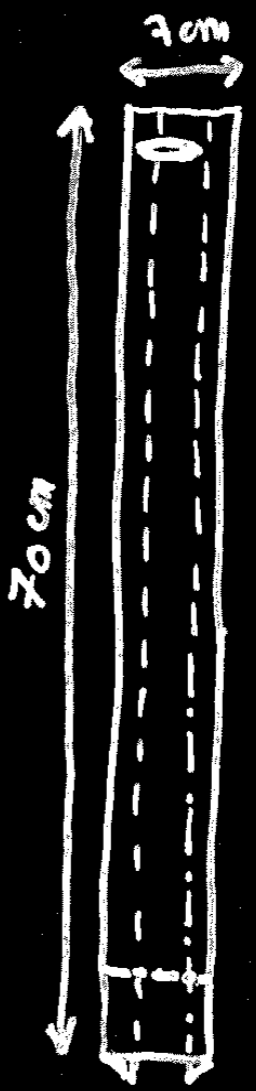
889. INSIDE FACING OF THE FRONT

HOOD FACING & FRONT

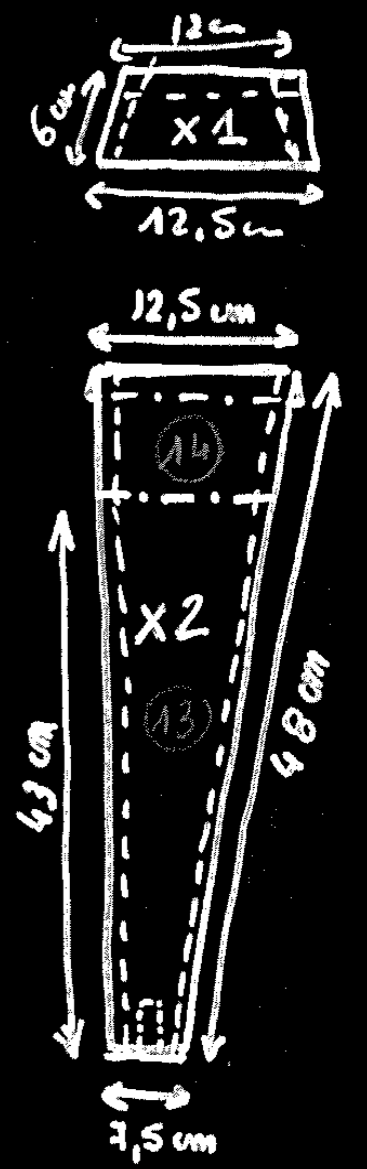


11. FACING TRIM

12. YOKE FACING OF THE FRONT 6



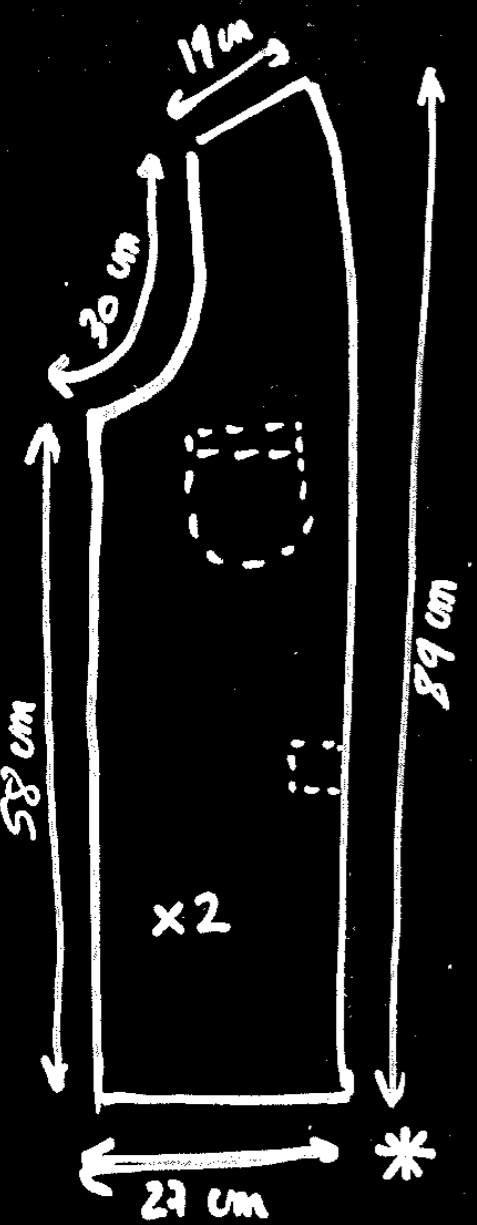
15. INSIDE HOOD YOKE



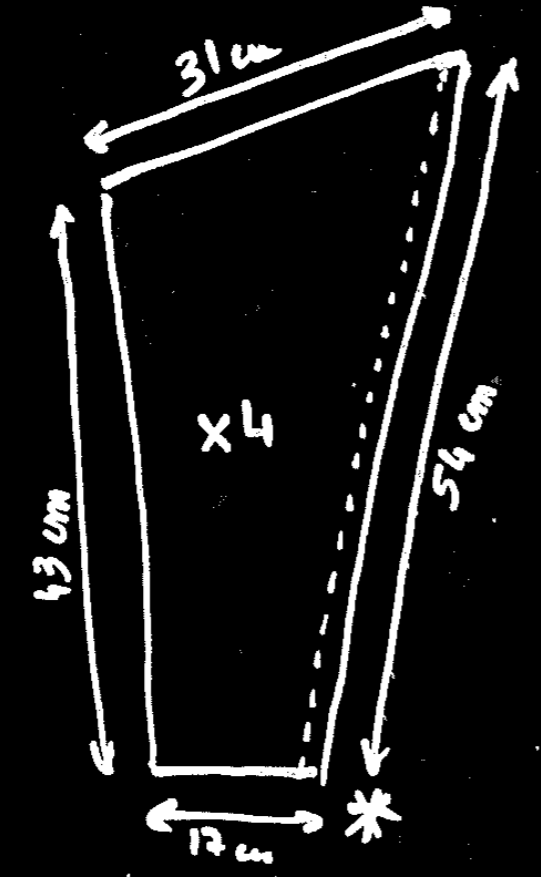
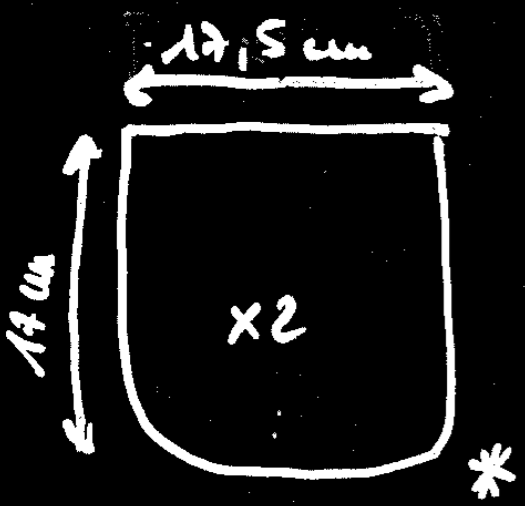
13 & 14. INSIDE & OUTSIDE HOOD YOKE



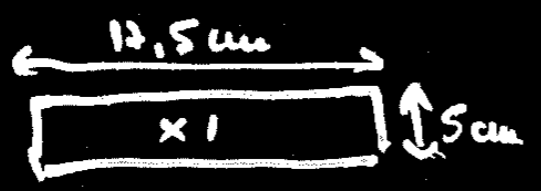
10. ZIPPER



22. LINING OF THE FRONT



23 & 24. RIGHT AND LEFT SIDES FOR THE SLEEVES

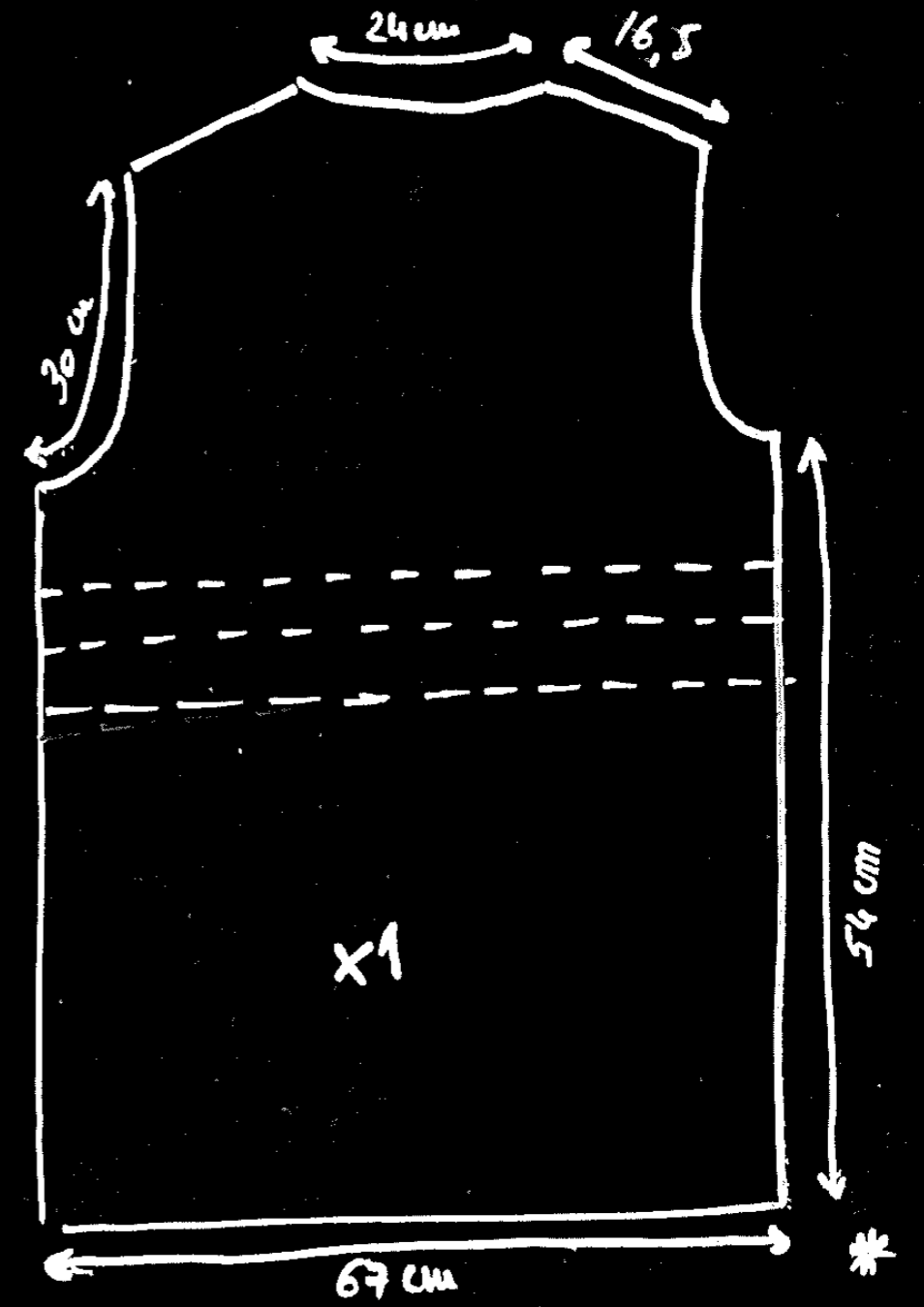


BUTTON PROTECTION FOR FABRIC

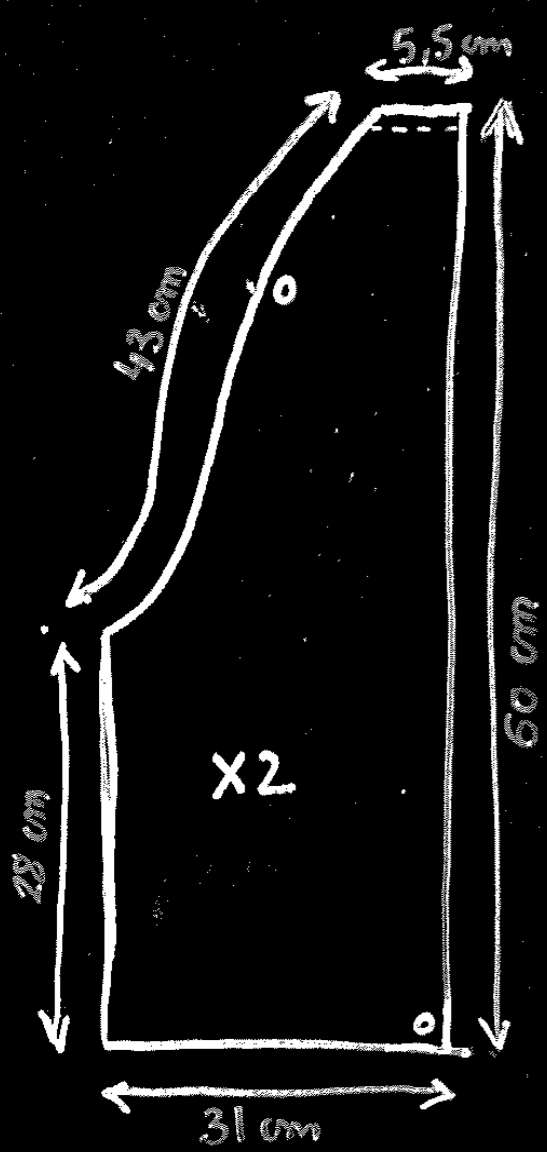
ACCESSORY & LINING



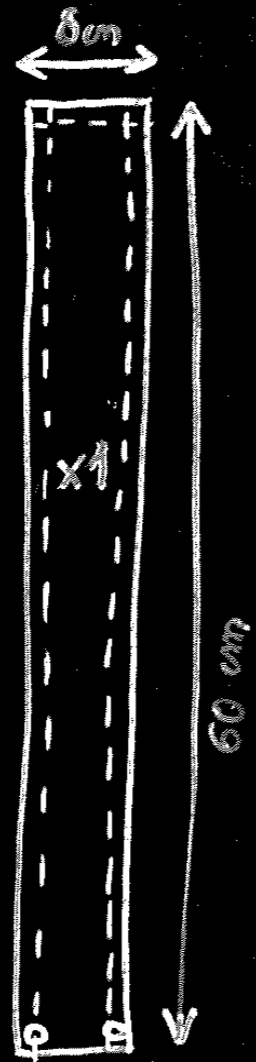
BUTTONS



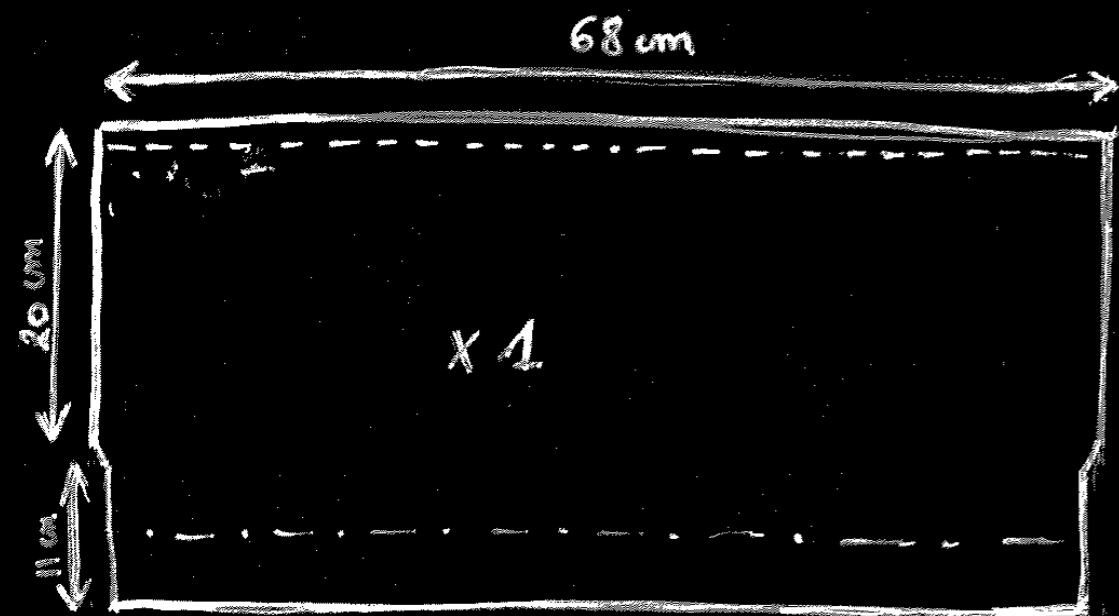
25. LINING OF THE BACK



16 & 17. BACK EXTREMITIES

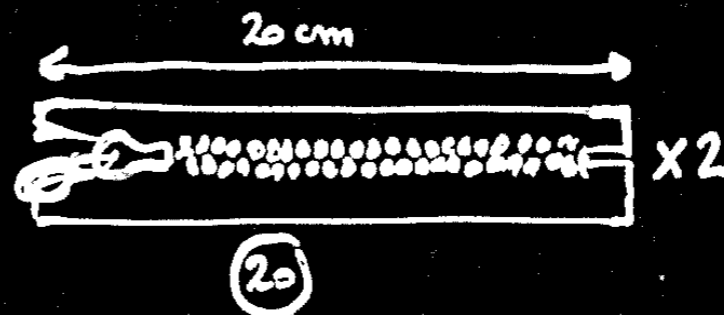
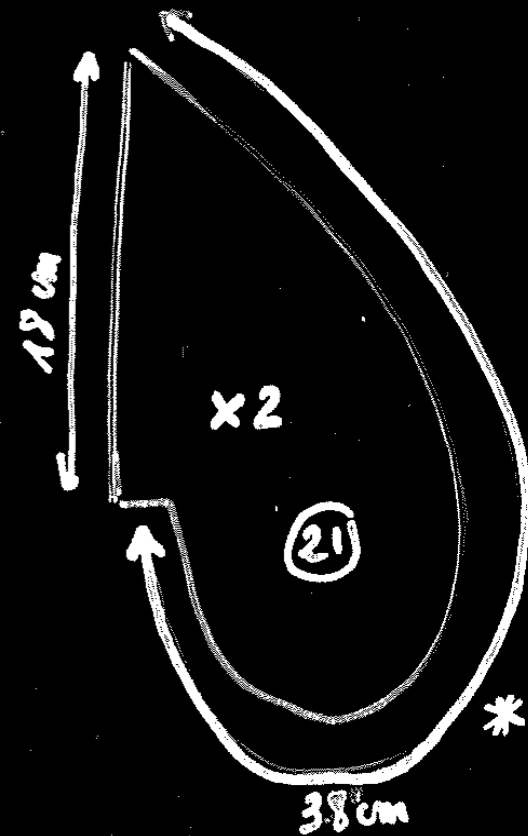
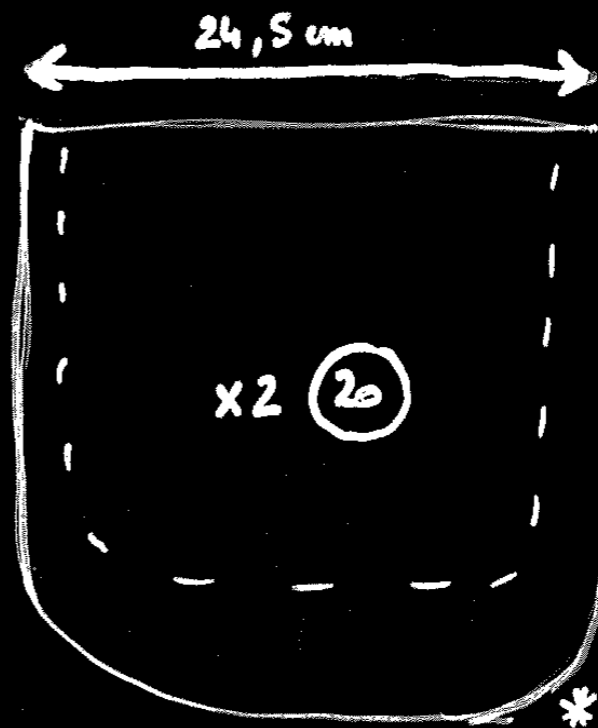
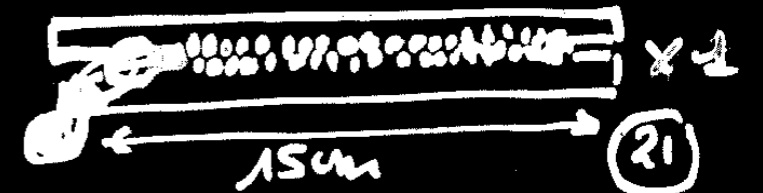
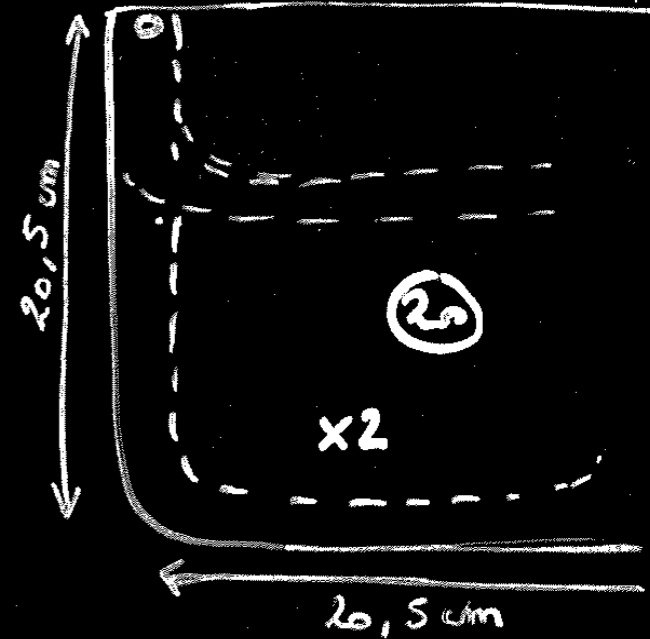
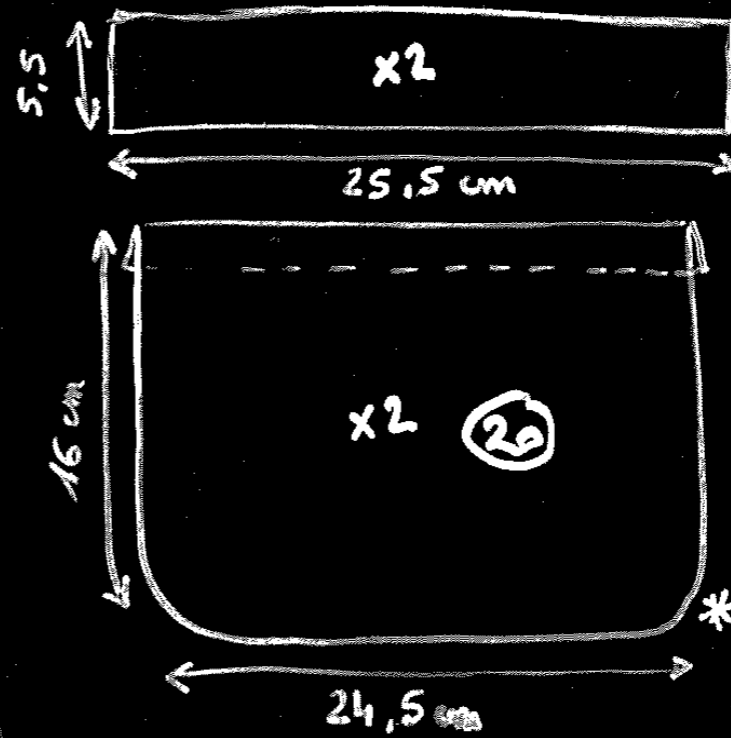
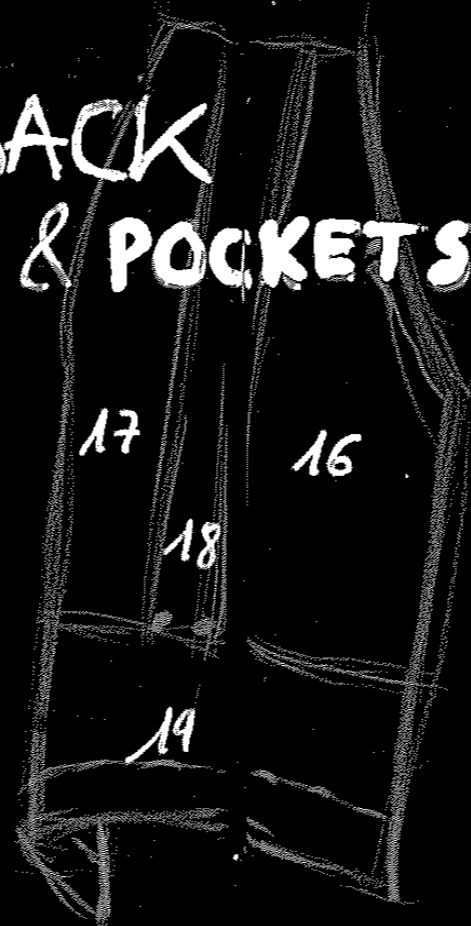


18. BACK MIDDLE



19. LOW SIDE OF THE BACK

BACK & POCKETS

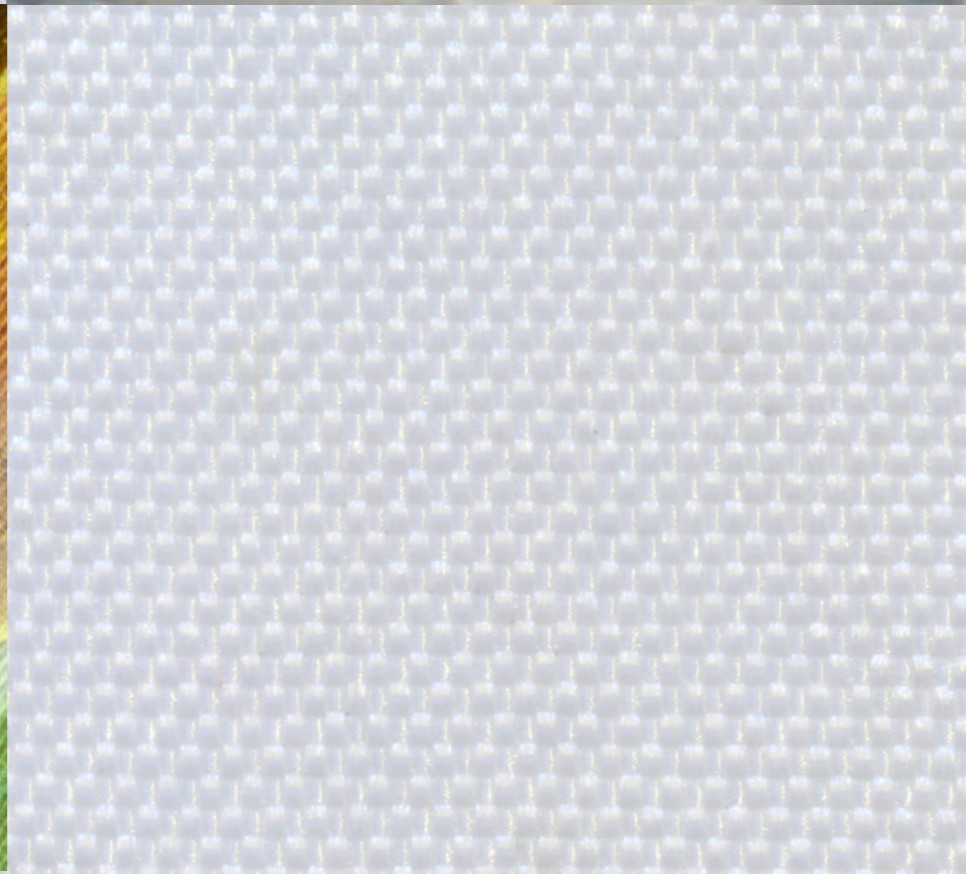
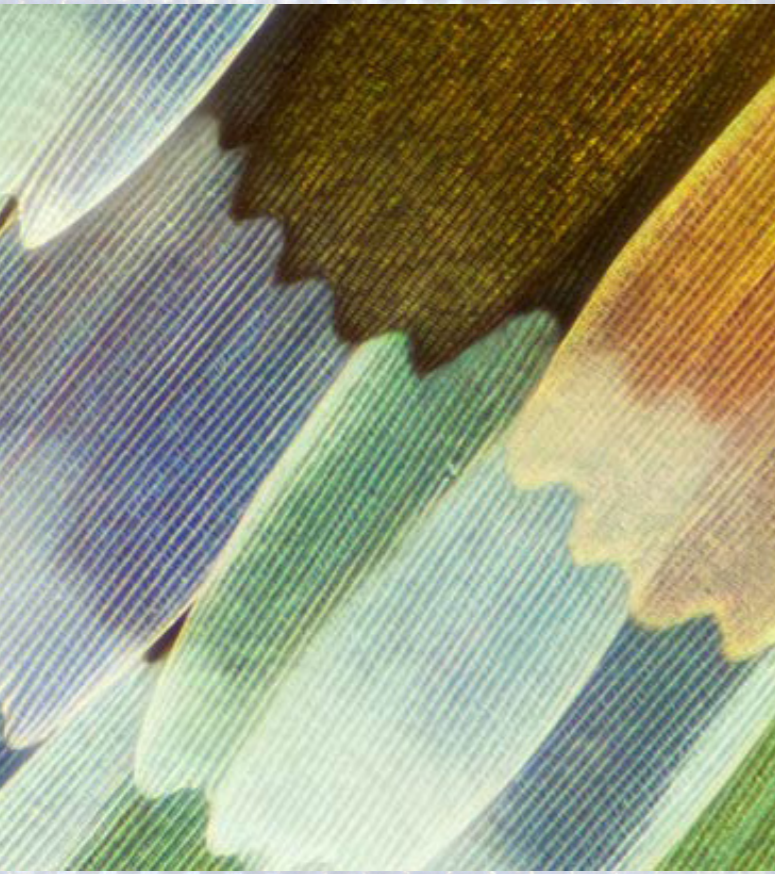
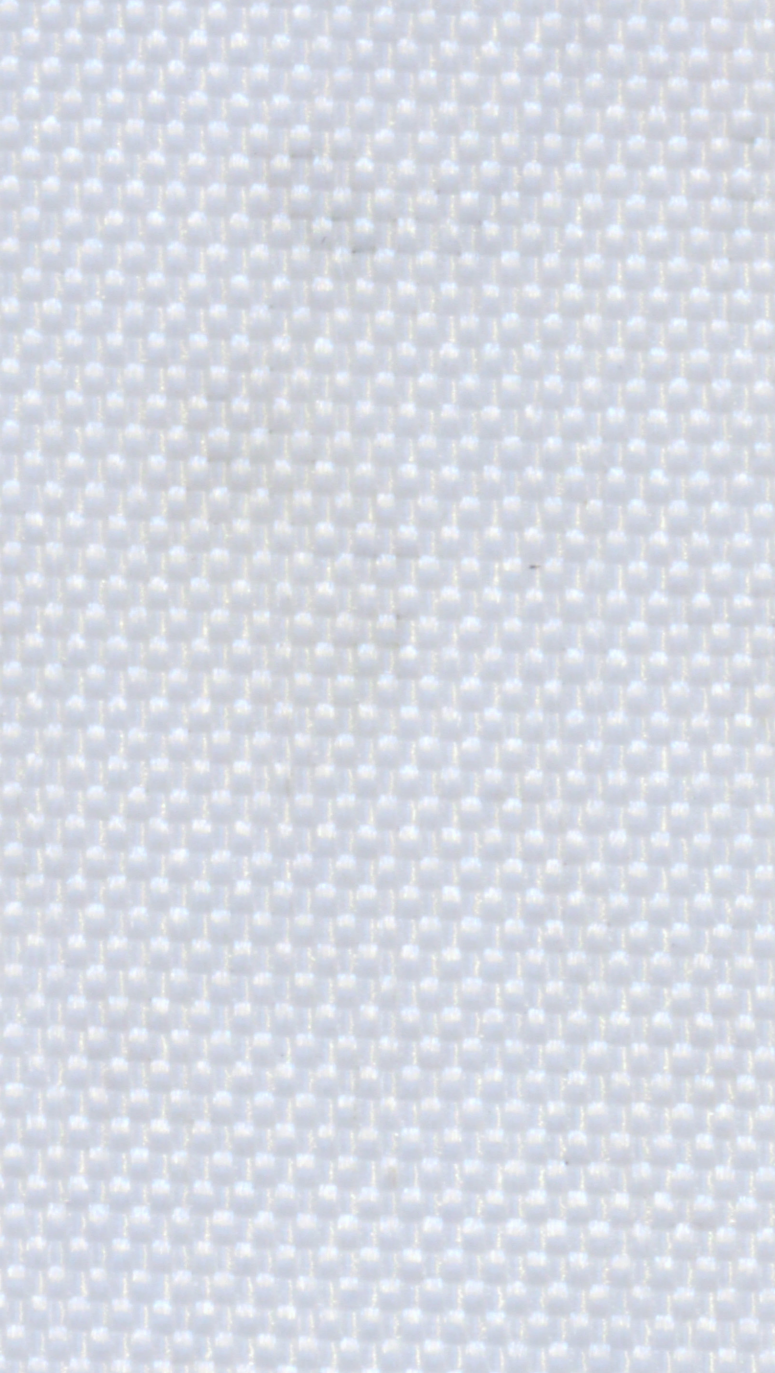


OBSERVATIONS
INVESTIGATIONS

STAND OUT ORIGINALSHAPES

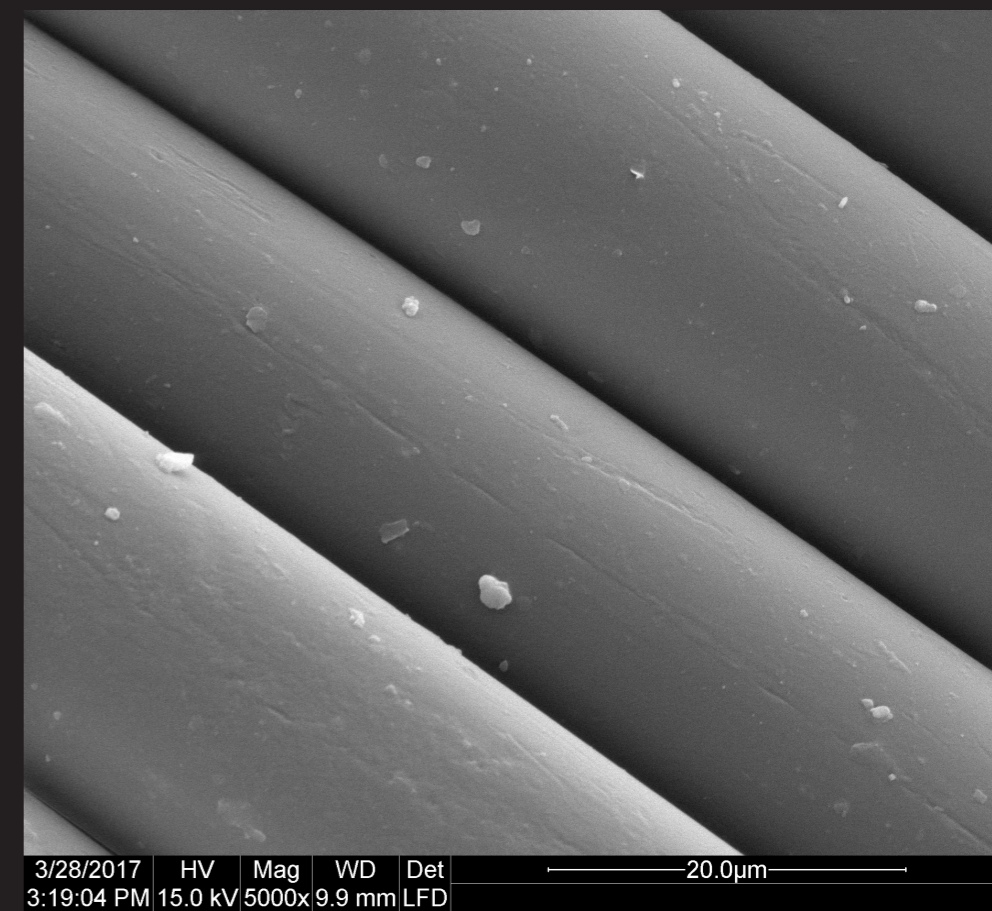
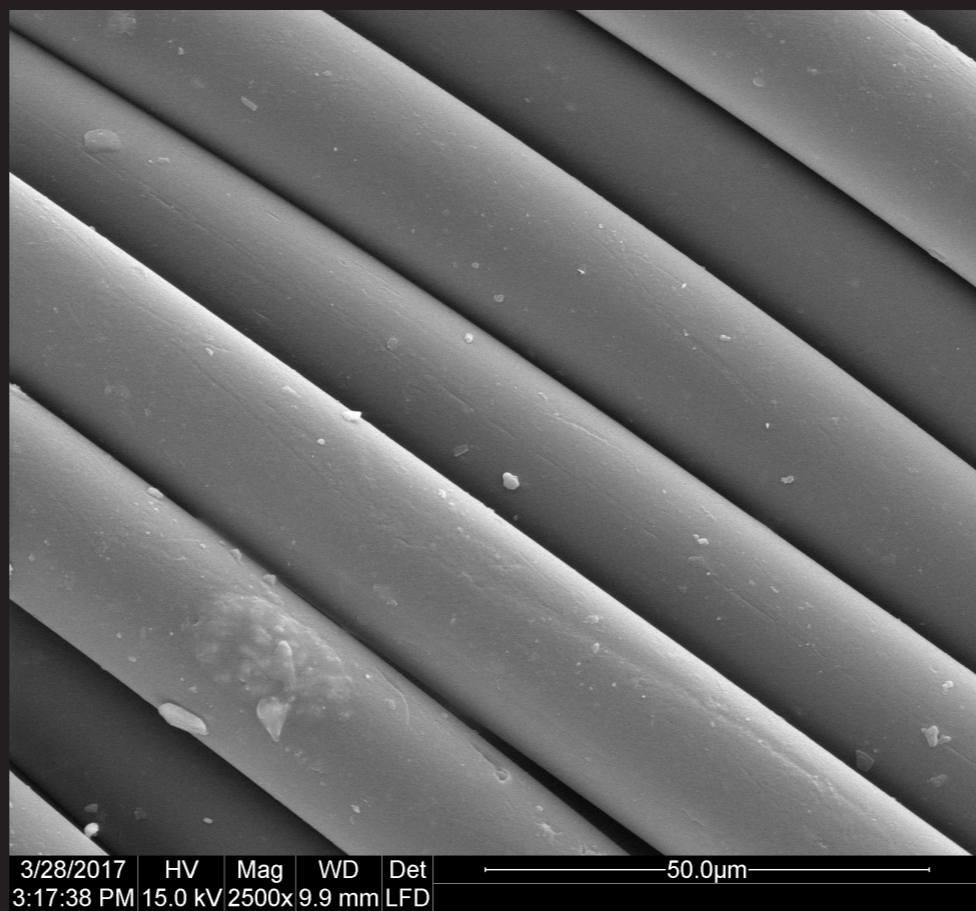
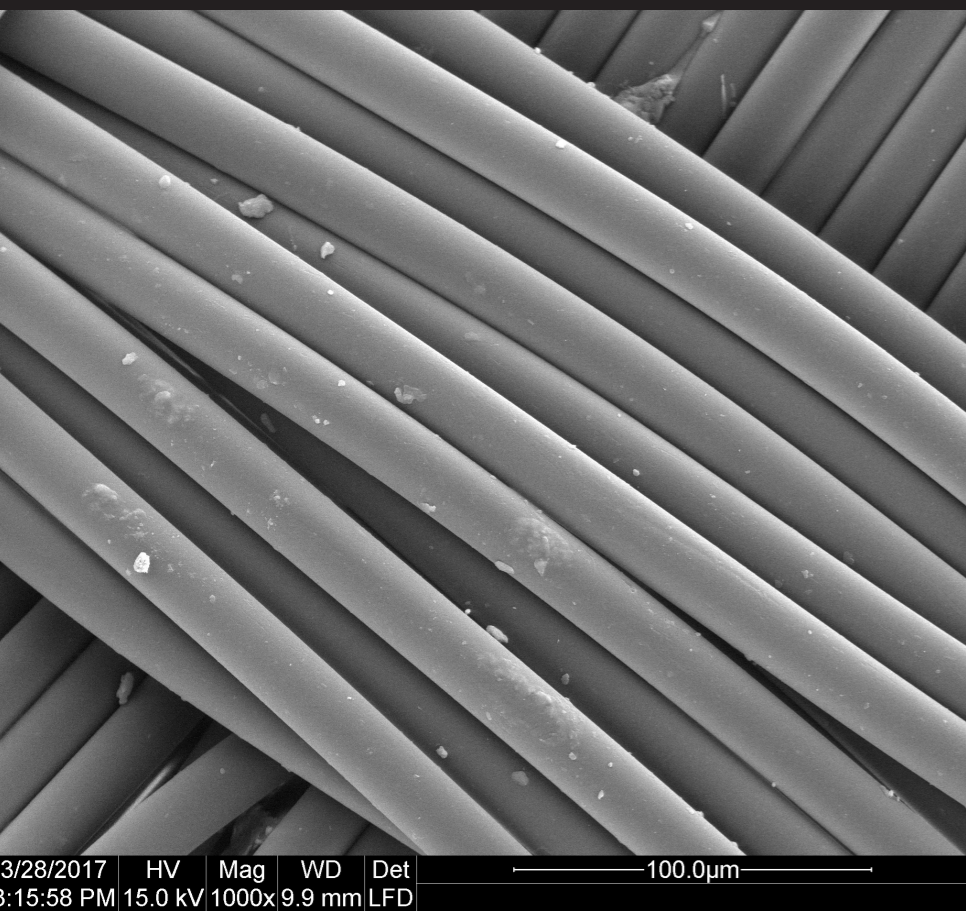
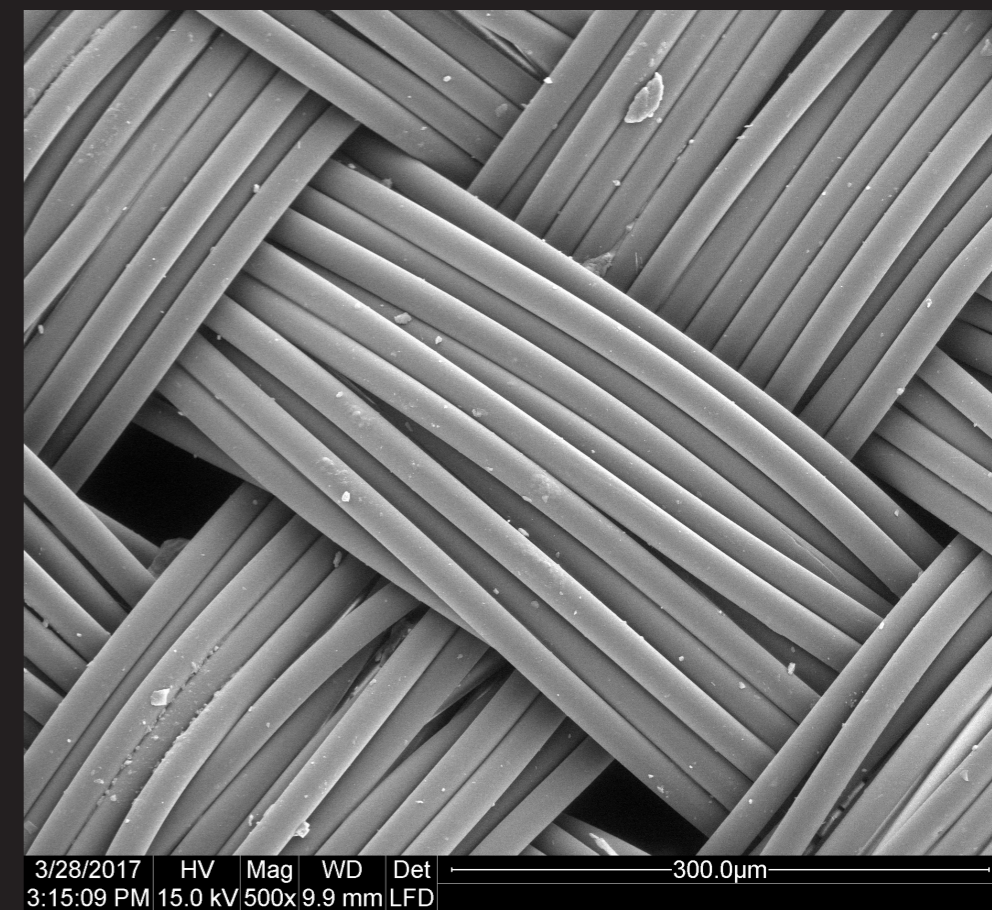
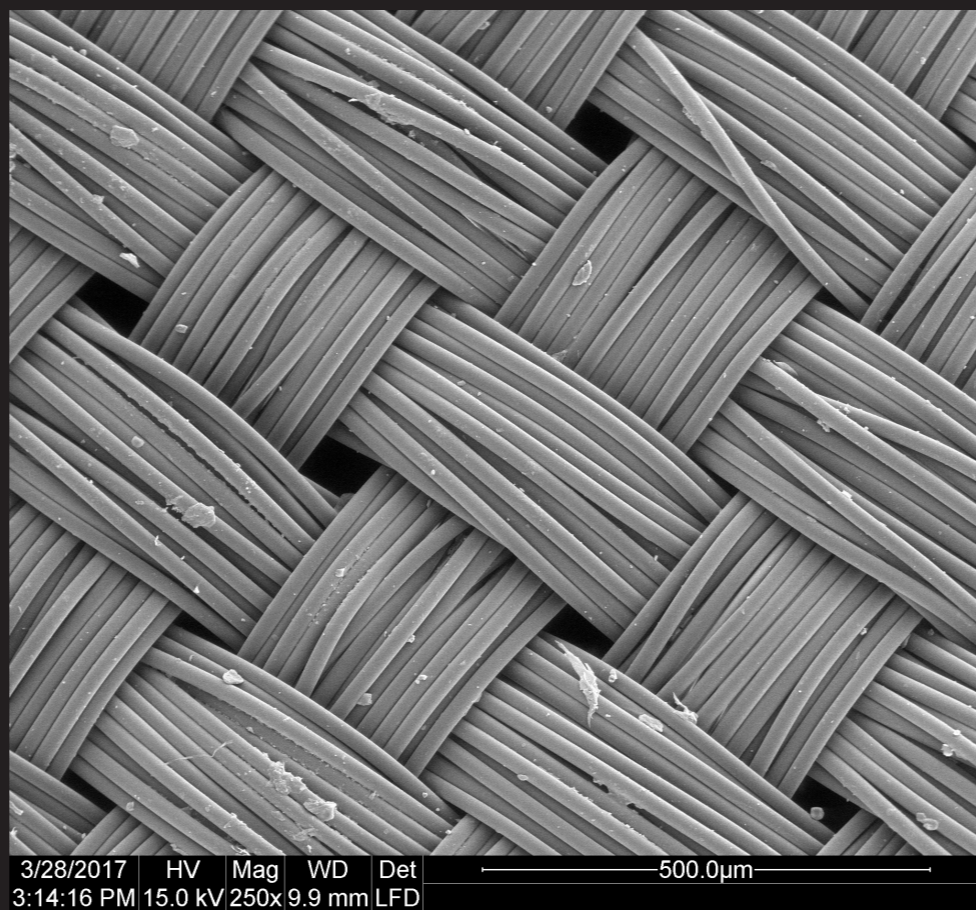
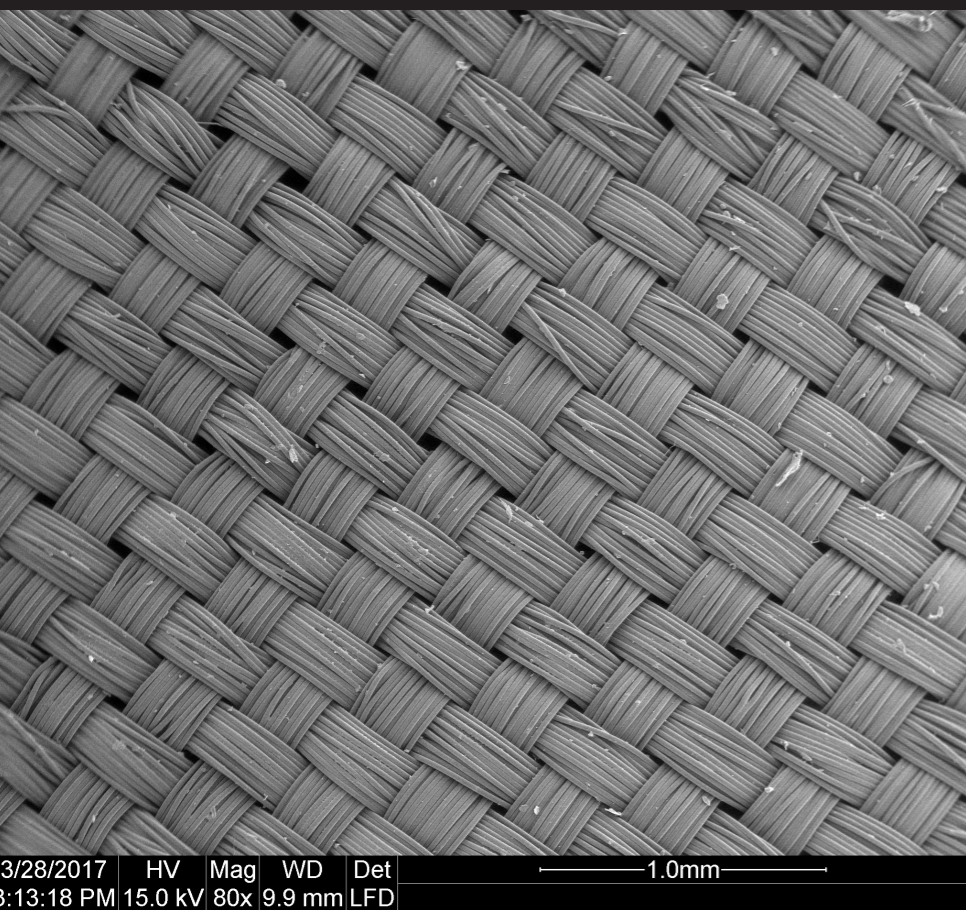
CORRESPONDING TEXTURE

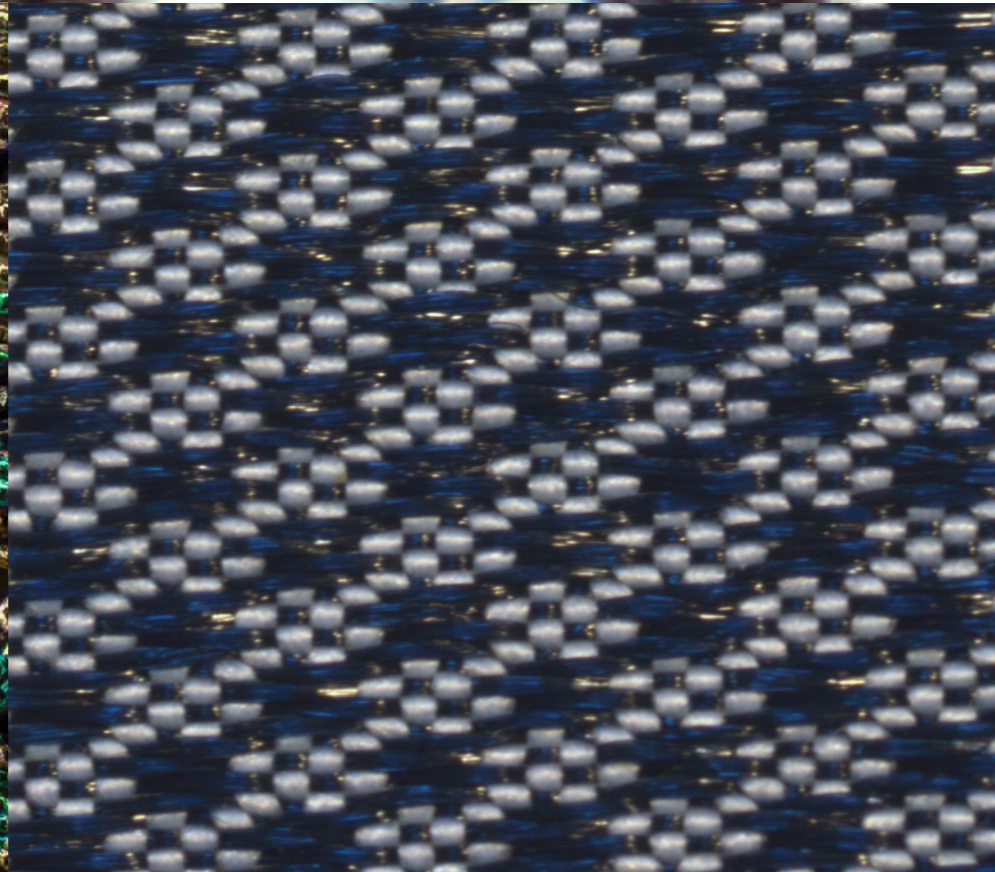
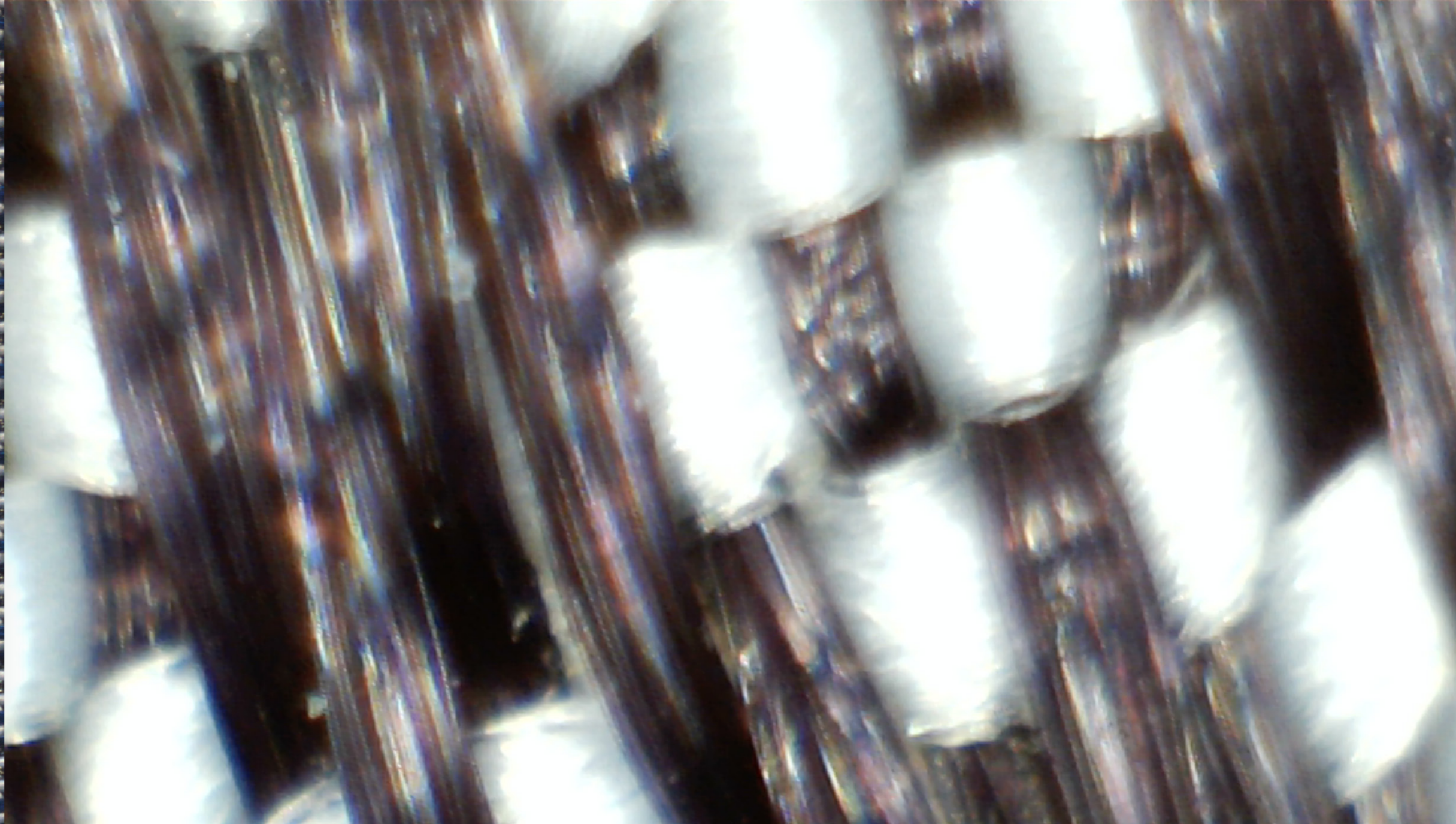
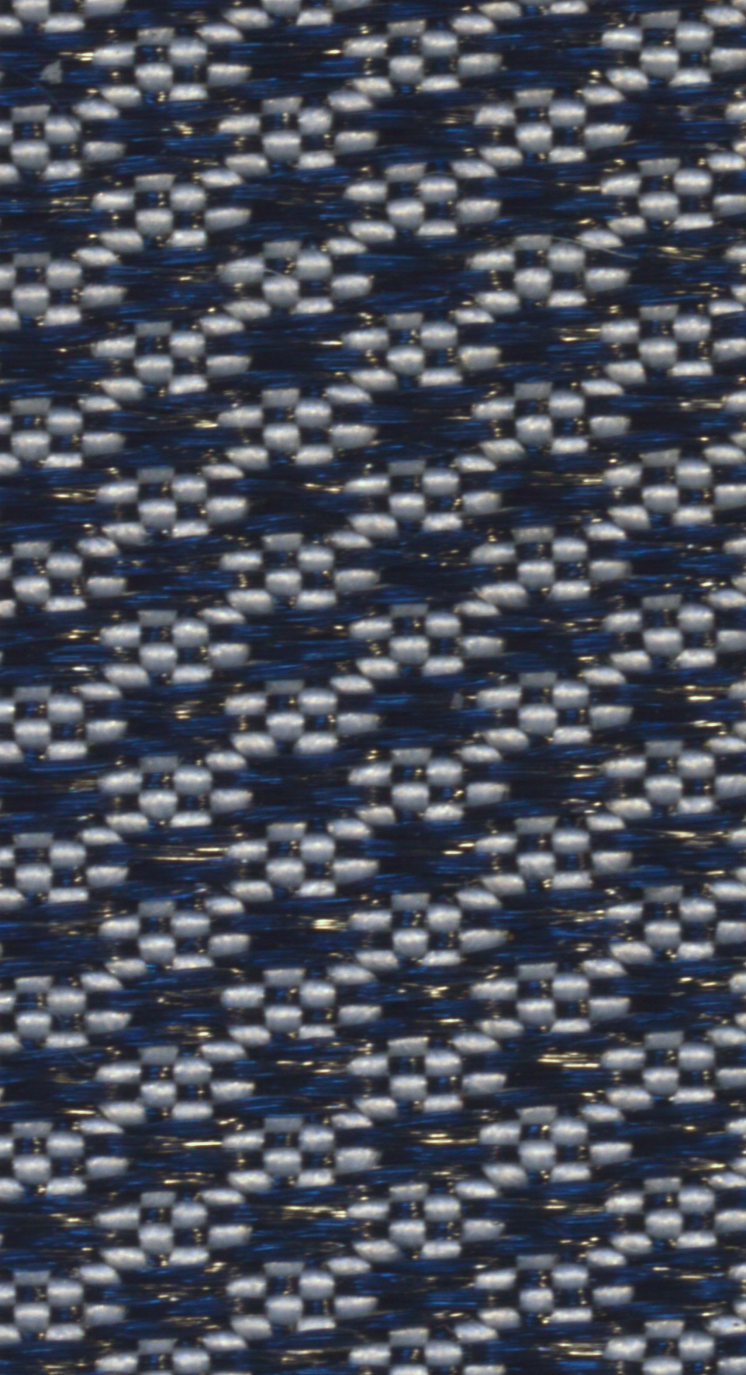
MICROSCOP OBSERVATIONS



MISE EN RELATION DES OBSERVATIONS MICROSCOPIQUES DU TISSU DE LA DOUBLURE ET D'AILE DE PAPILLON.

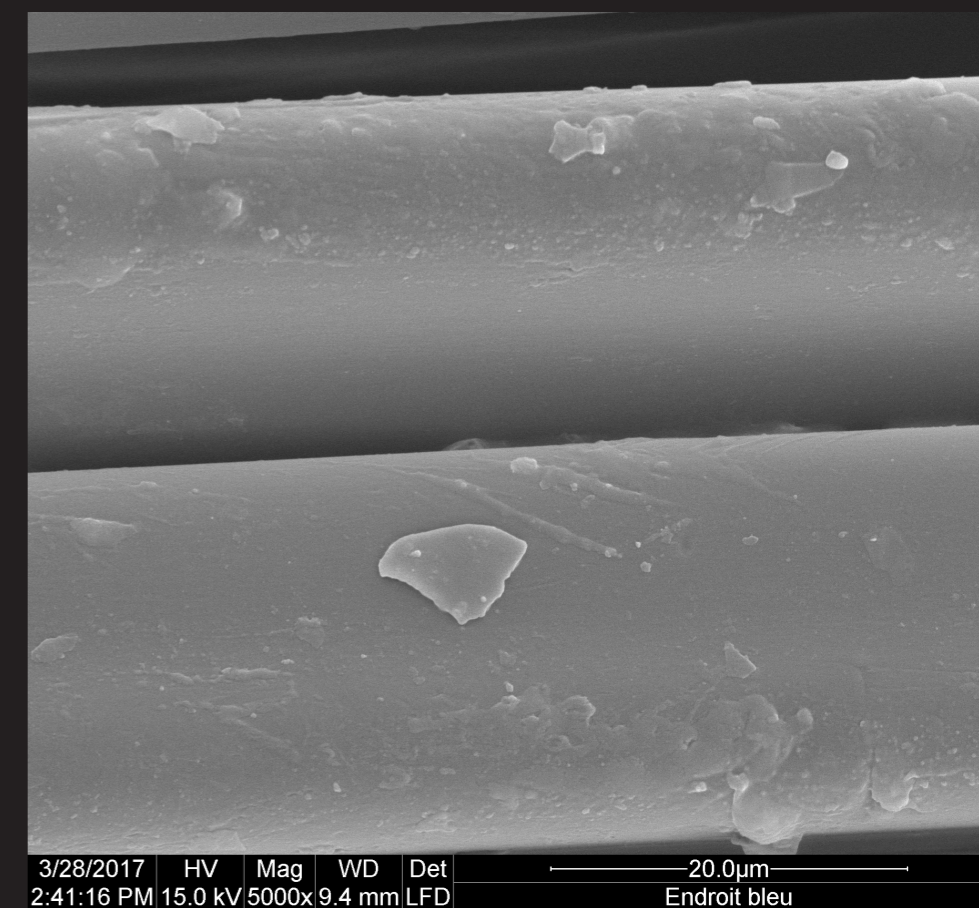
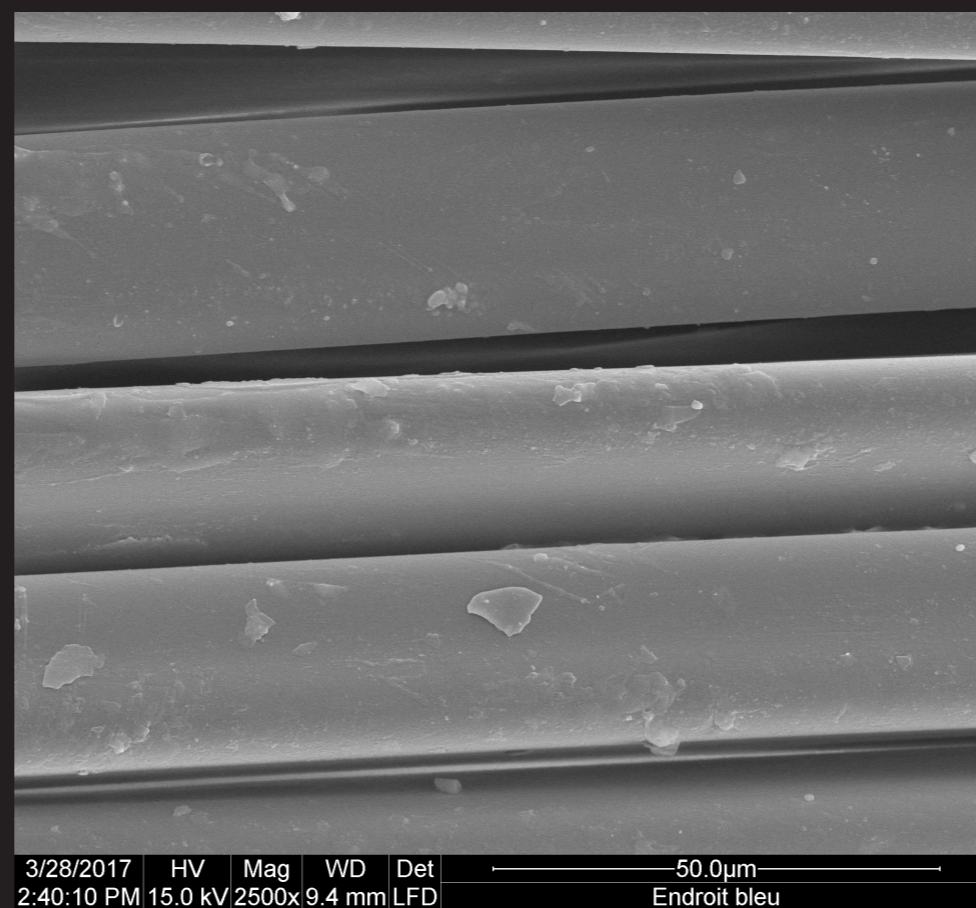
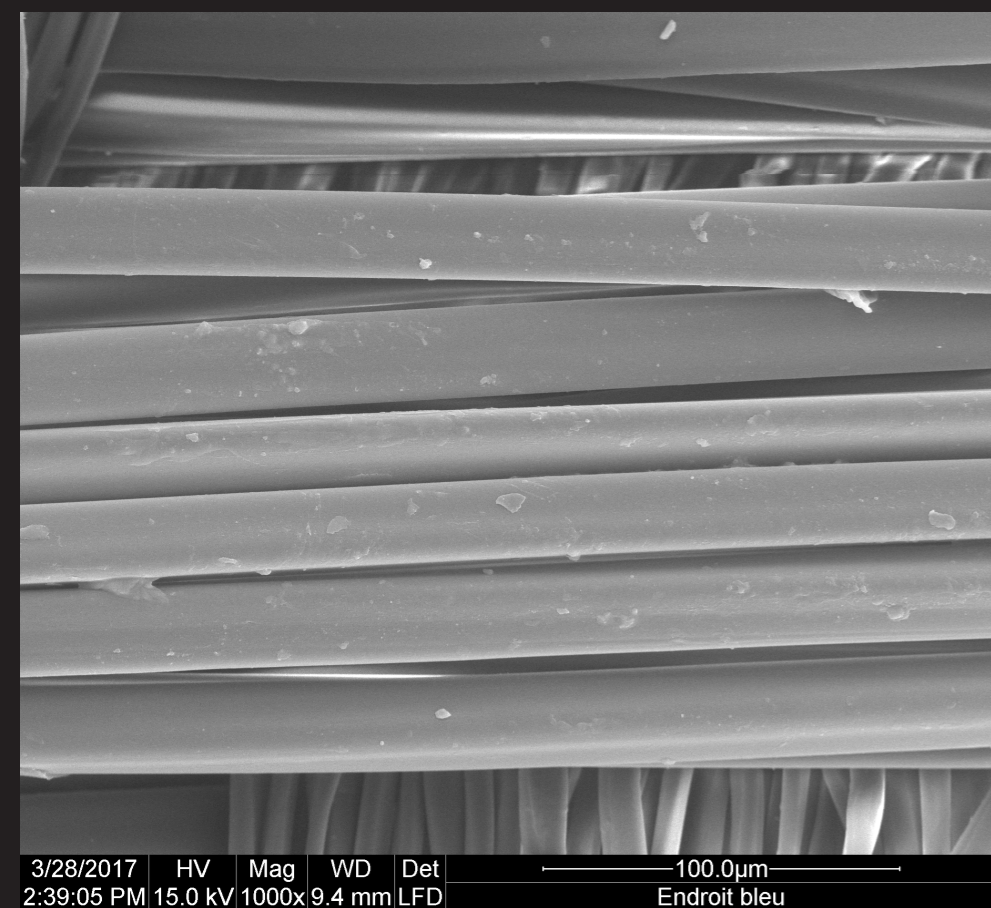
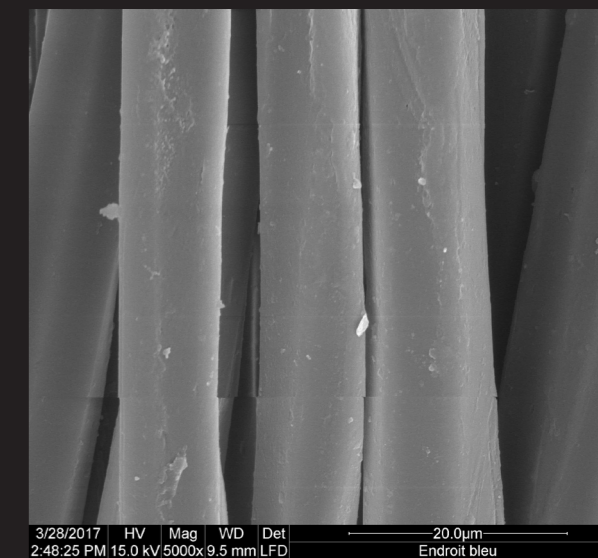
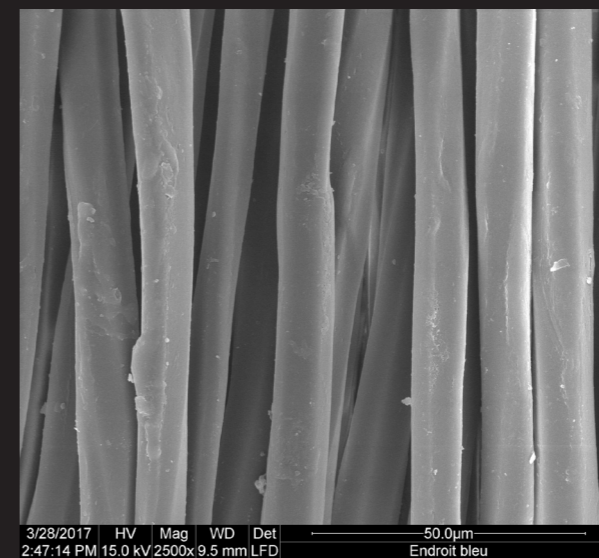
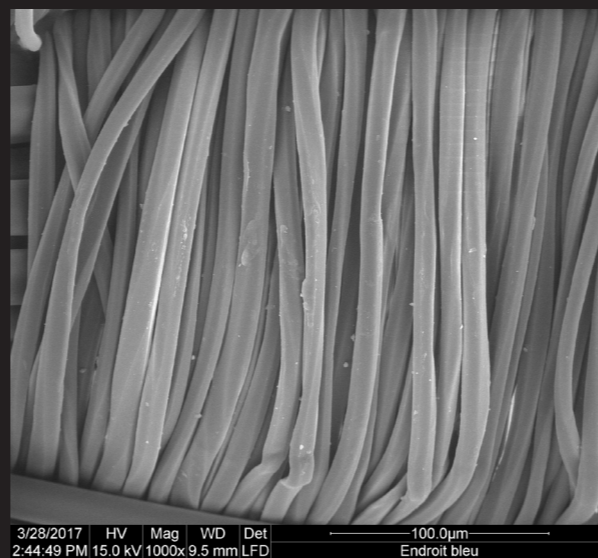
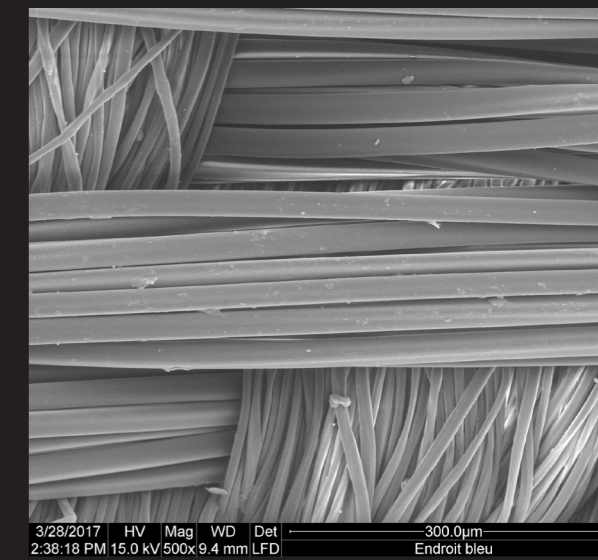
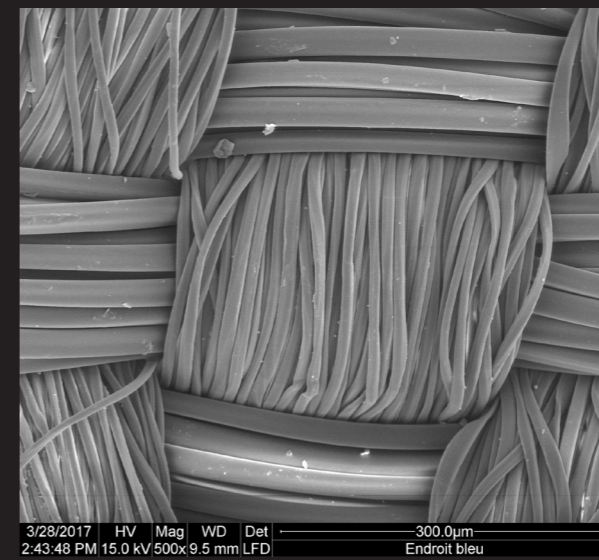
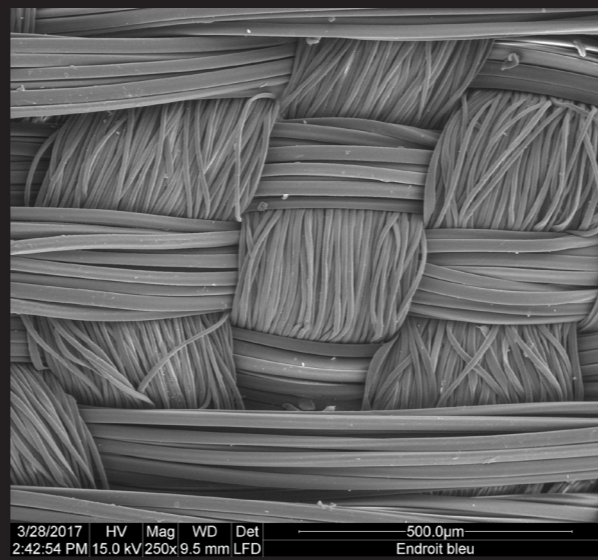
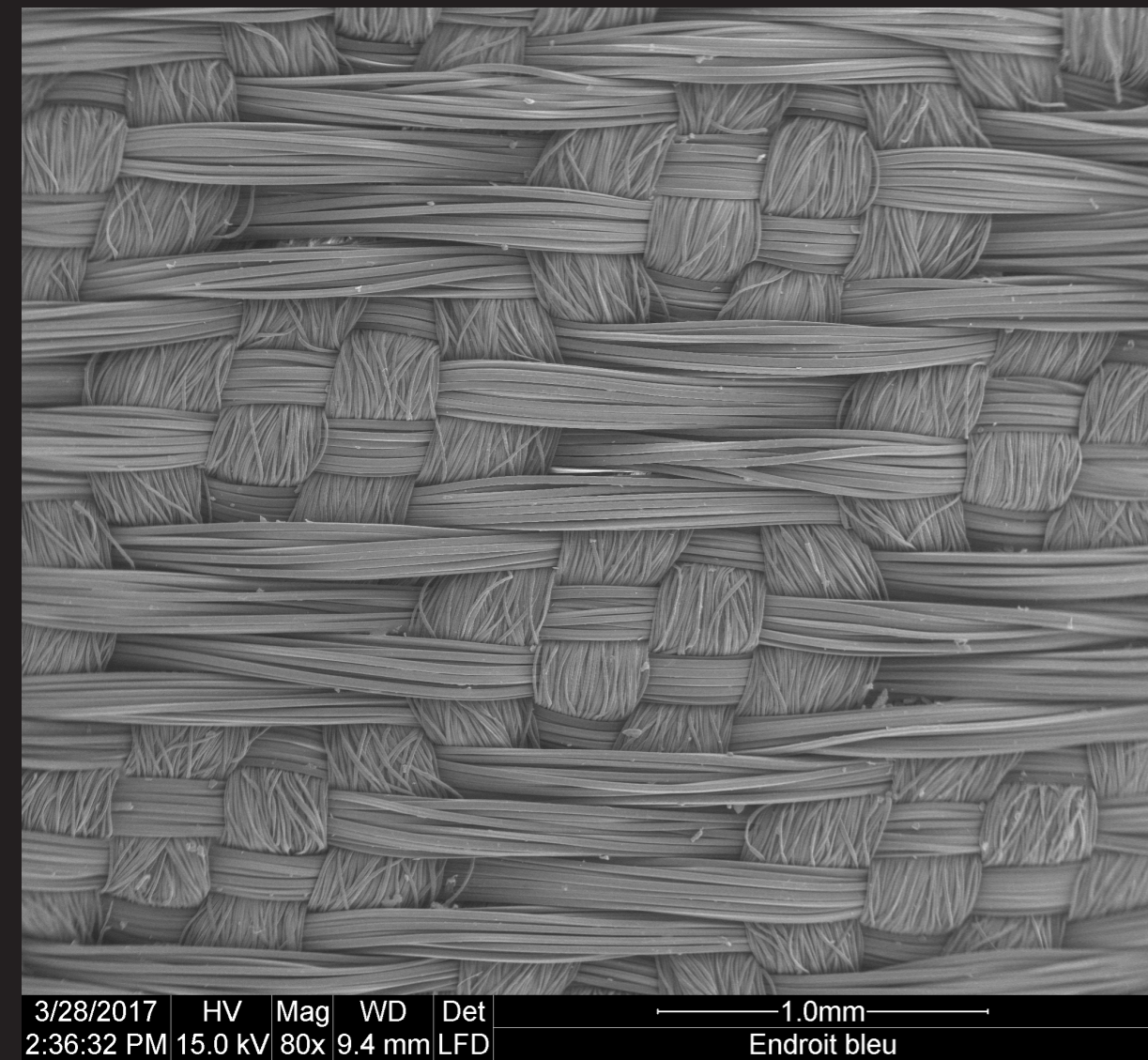
LA RELATION S'EST FAITE AUTOUR DE LA NOTION DE **SUPERPOSITION**, DE **TRANSPARENCE** ET DE TEXTURE **FILAIRE/FILANDREUSE**

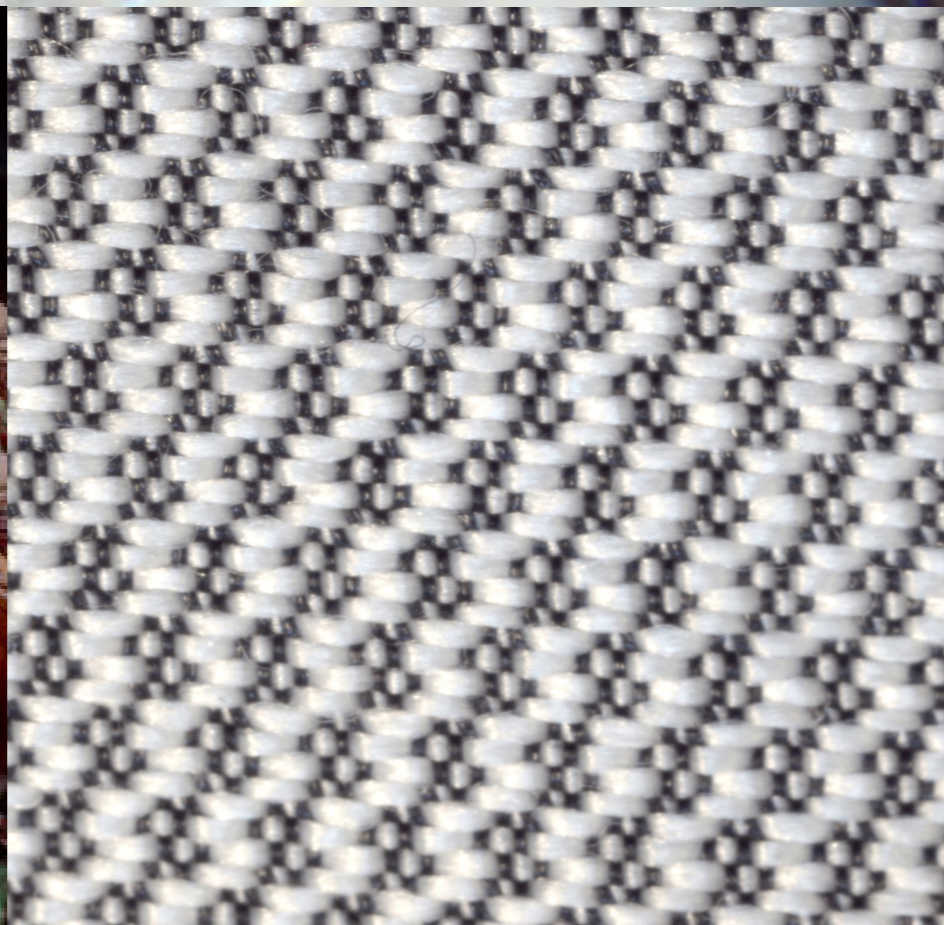
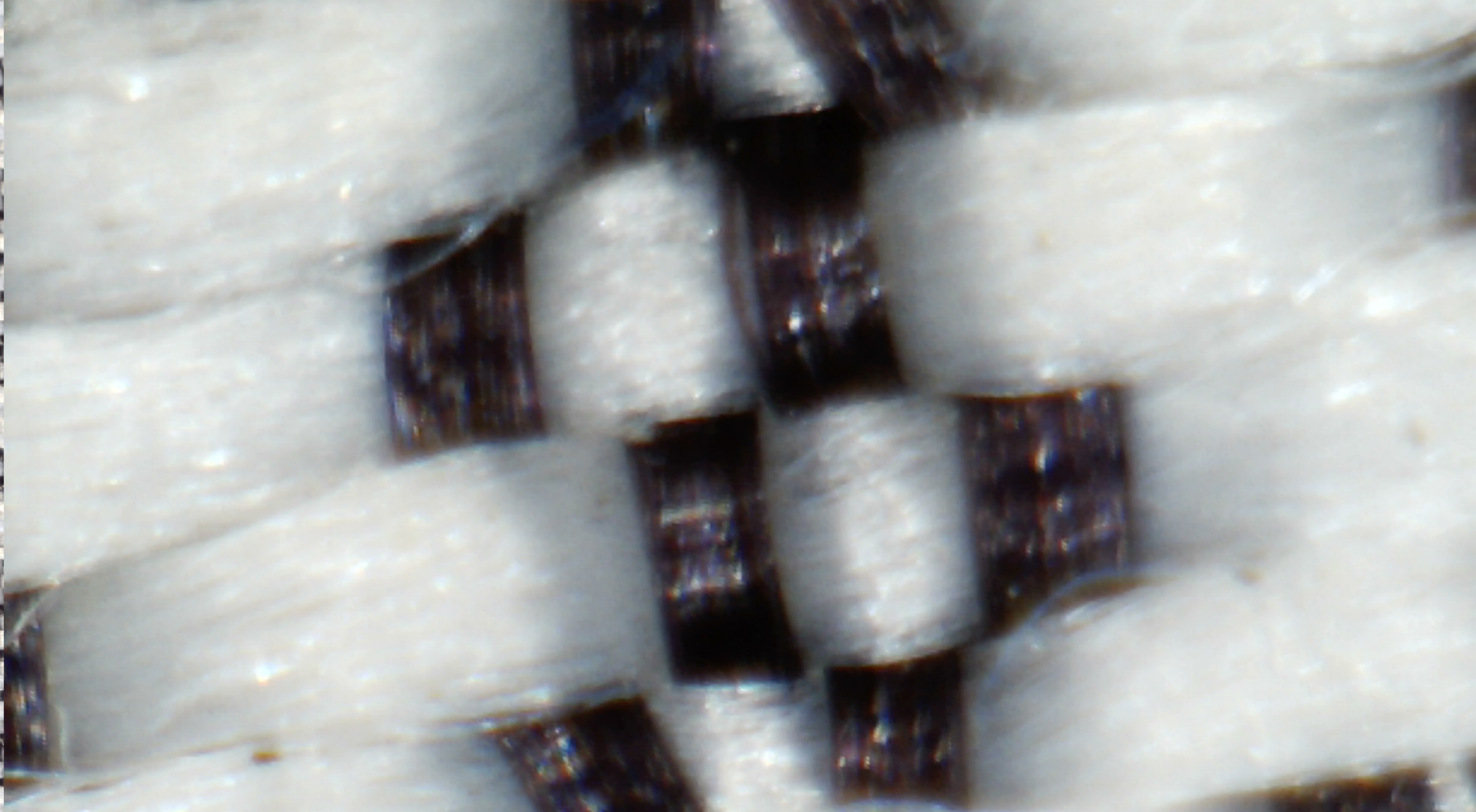
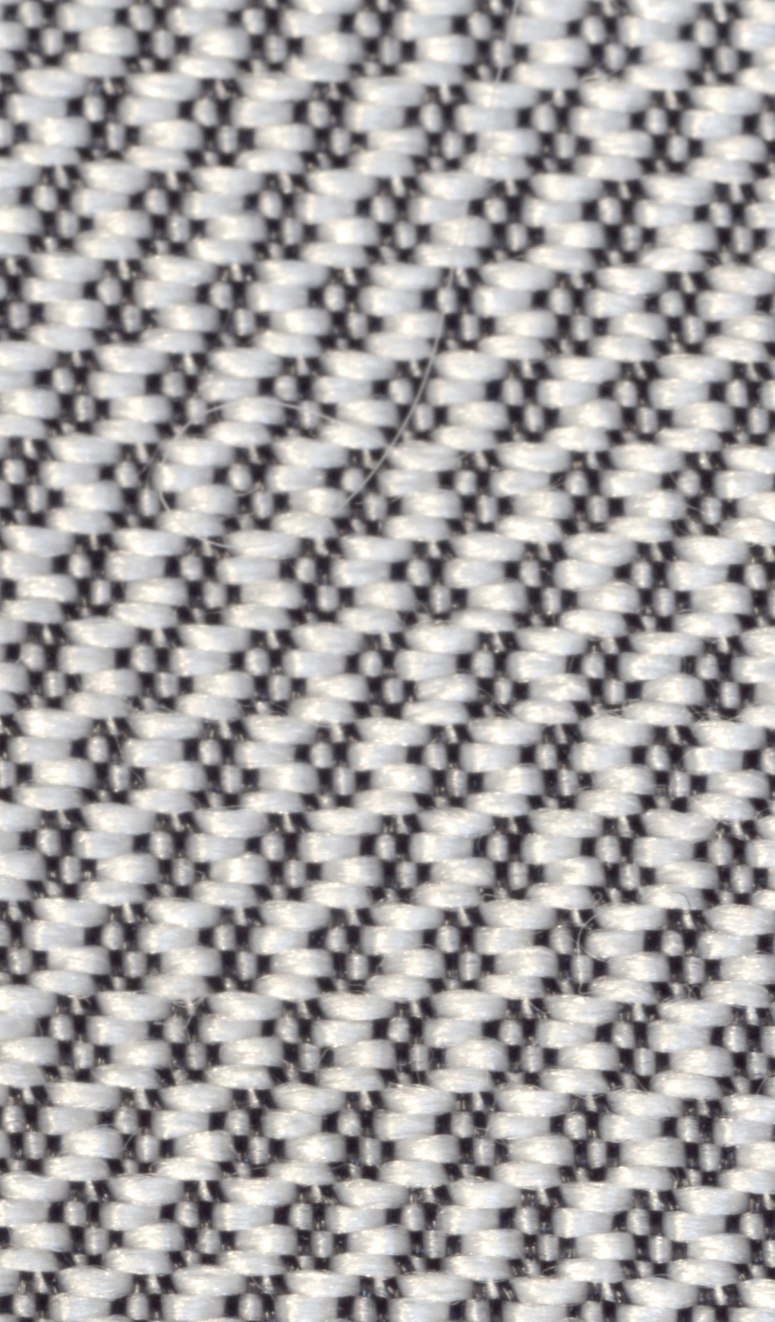




MISE EN RELATION DES OBSERVATIONS MICROSCOPIQUES DU TISSU PRINCIPAL ET D'UNE PLUME DE PAN

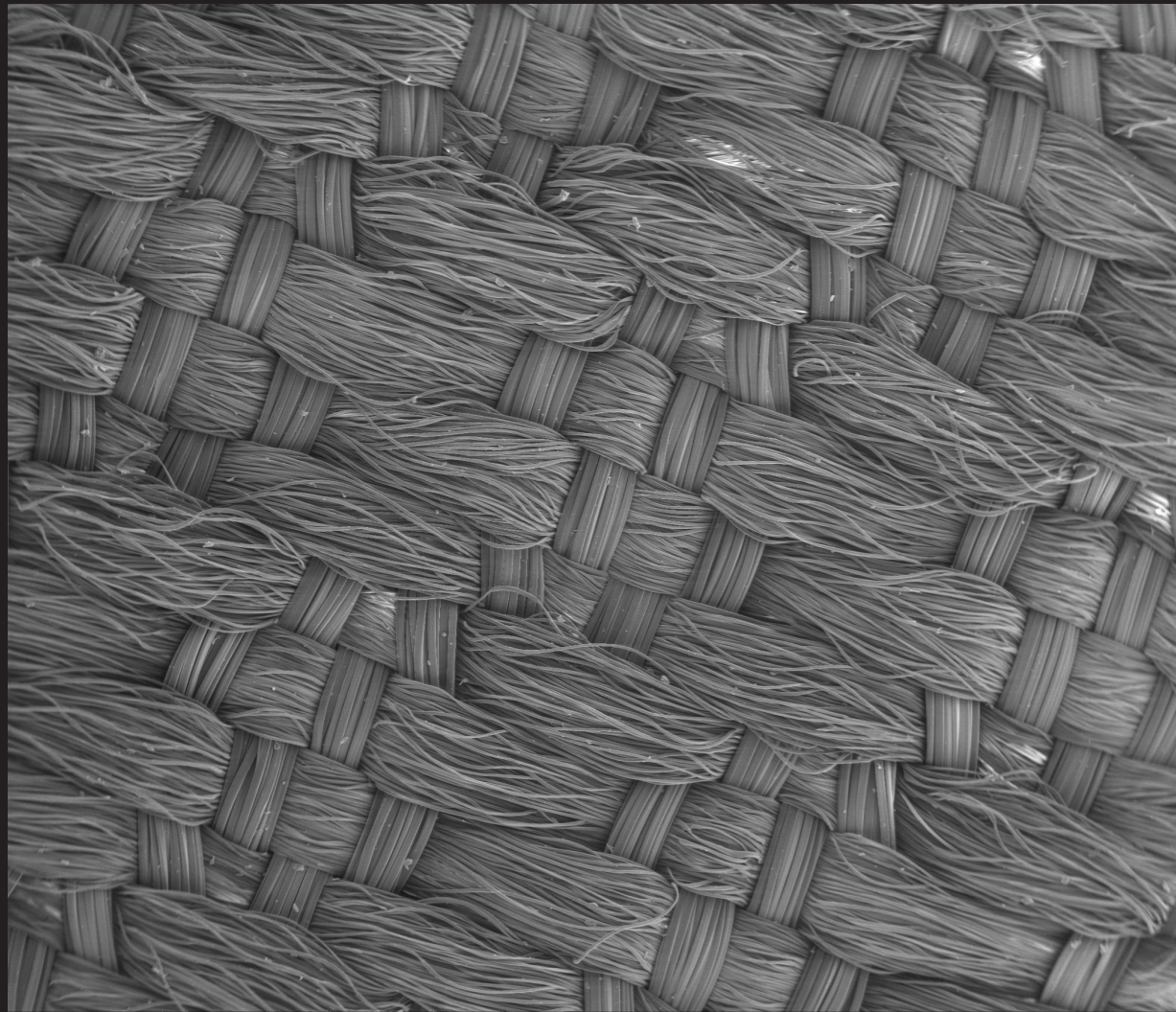
LA RELATION RÉSIDE DANS LA NOTION DE **CHEUVAUchement** DES COULEURS, DES **LI-NÉARITÉS COUPÉS** PAR DES TEXTURES ET REFLETS COLORÉS INTERNES À CES DERNIÈRES.



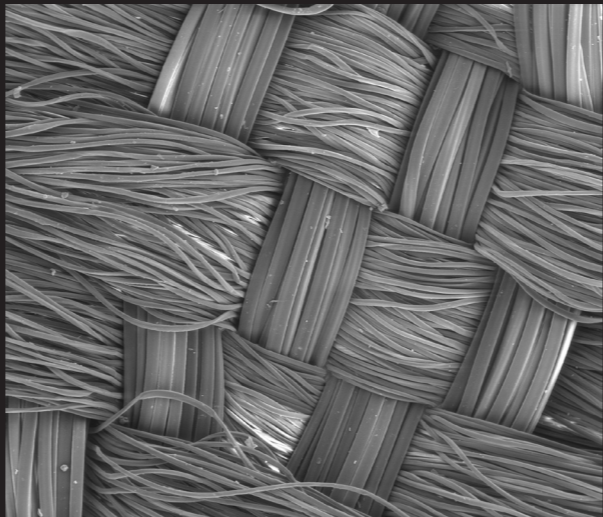


MISE EN RELATION DES OBSERVATIONS MICROSCOPIQUES DU REVERS DU TISSU GRIS CLAIR ET D'ALGUES NAISSANTES.

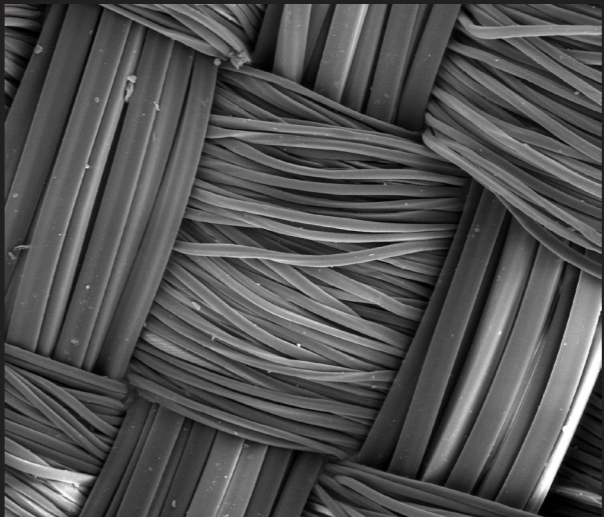
LA RELATION RÉSIDE DANS LA NOTION DE D'ONDULATIONS FORMÉES PAR LE TISSAGE ET DE LA **LINÉARITÉ** DES FILS ET DE CELLES DE LA TEXTURE DES ALGUES



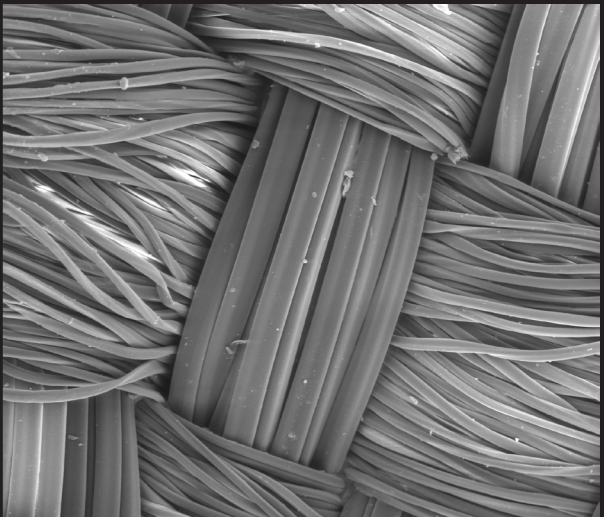
3/28/2017 HV Mag WD Det
1:26:47 PM 15.0 kV 80x 9.5 mm LFD
1.0mm
Endroit blanc



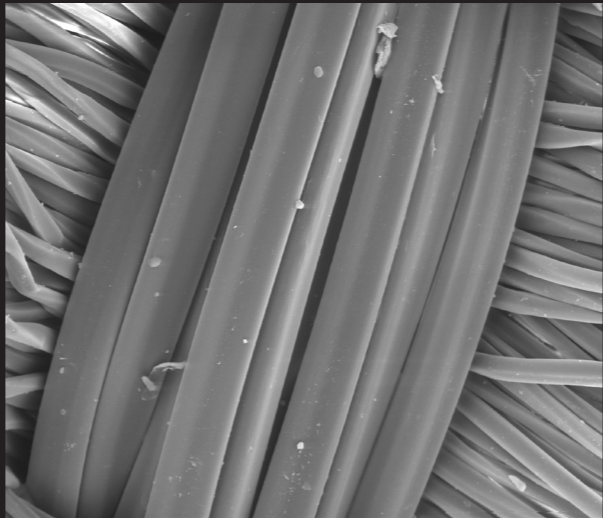
3/28/2017 HV Mag WD Det
1:30:04 PM 15.0 kV 250x 9.5 mm LFD
500.0µm
Endroit blanc



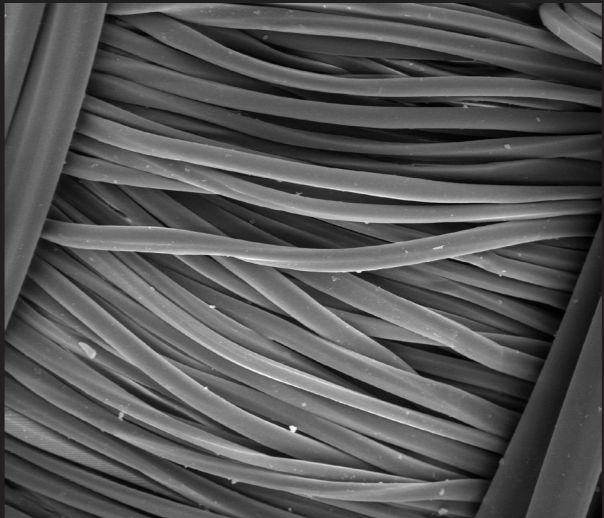
3/28/2017 HV Mag WD Det
1:41:33 PM 15.0 kV 500x 9.5 mm LFD
300.0µm
Endroit blanc



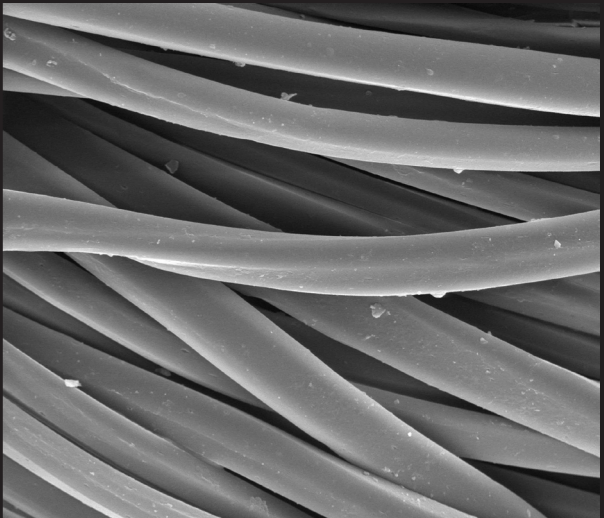
3/28/2017 HV Mag WD Det
1:31:01 PM 15.0 kV 500x 9.5 mm LFD
300.0µm
Endroit blanc



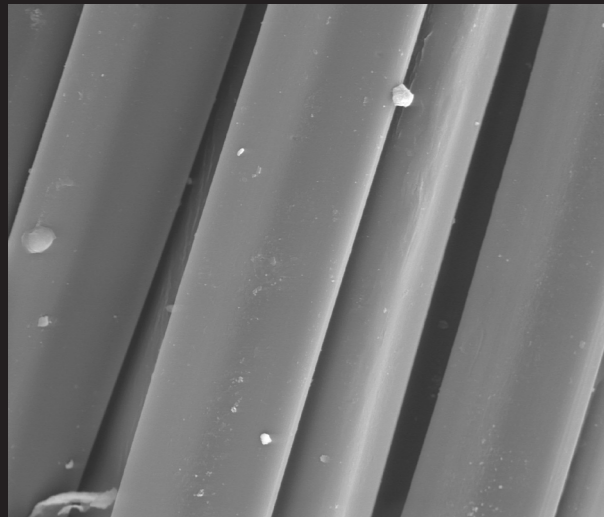
3/28/2017 HV Mag WD Det
1:32:24 PM 15.0 kV 1000x 9.5 mm LFD
100.0µm
Endroit blanc



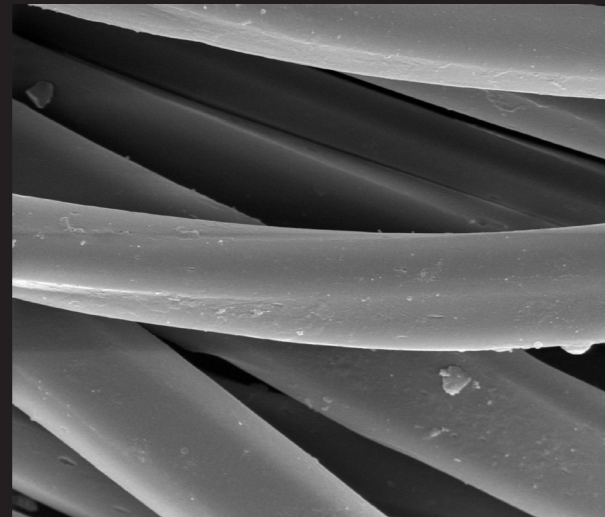
3/28/2017 HV Mag WD Det
1:42:24 PM 15.0 kV 1000x 9.5 mm LFD
100.0µm
Endroit blanc



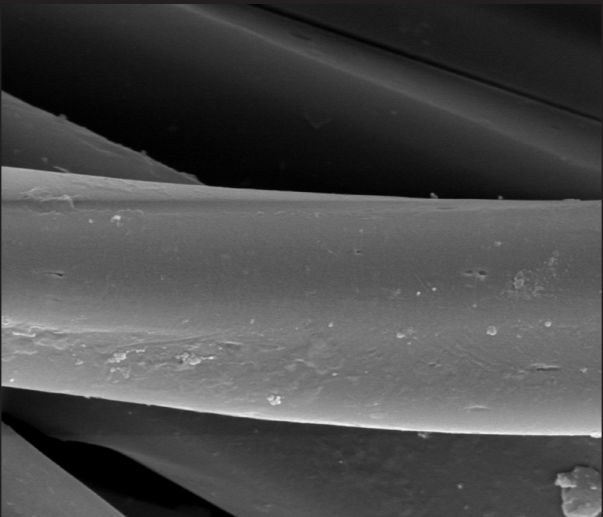
3/28/2017 HV Mag WD Det
1:43:17 PM 15.0 kV 2500x 9.5 mm LFD
50.0µm
Endroit blanc



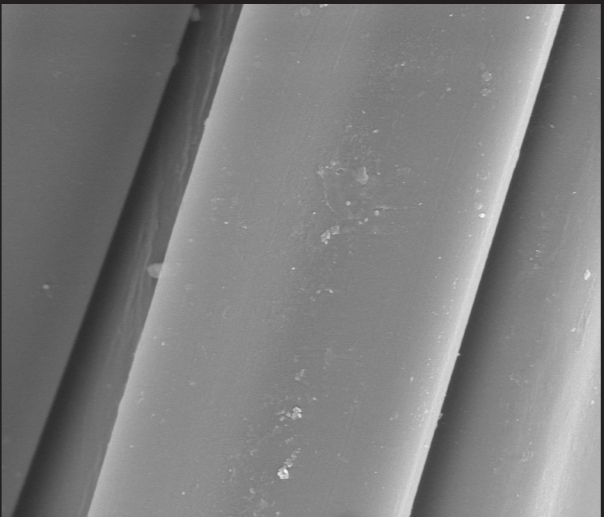
3/28/2017 HV Mag WD Det
1:33:26 PM 15.0 kV 2500x 9.5 mm LFD
50.0µm
Endroit blanc



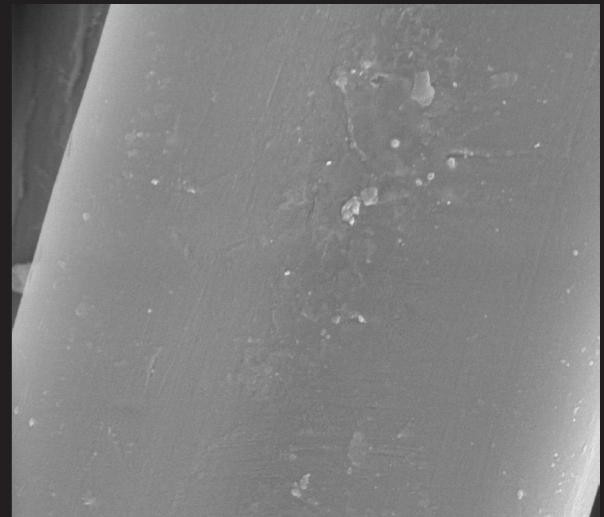
3/28/2017 HV Mag WD Det
1:44:26 PM 15.0 kV 5000x 9.5 mm LFD
20.0µm
Endroit blanc



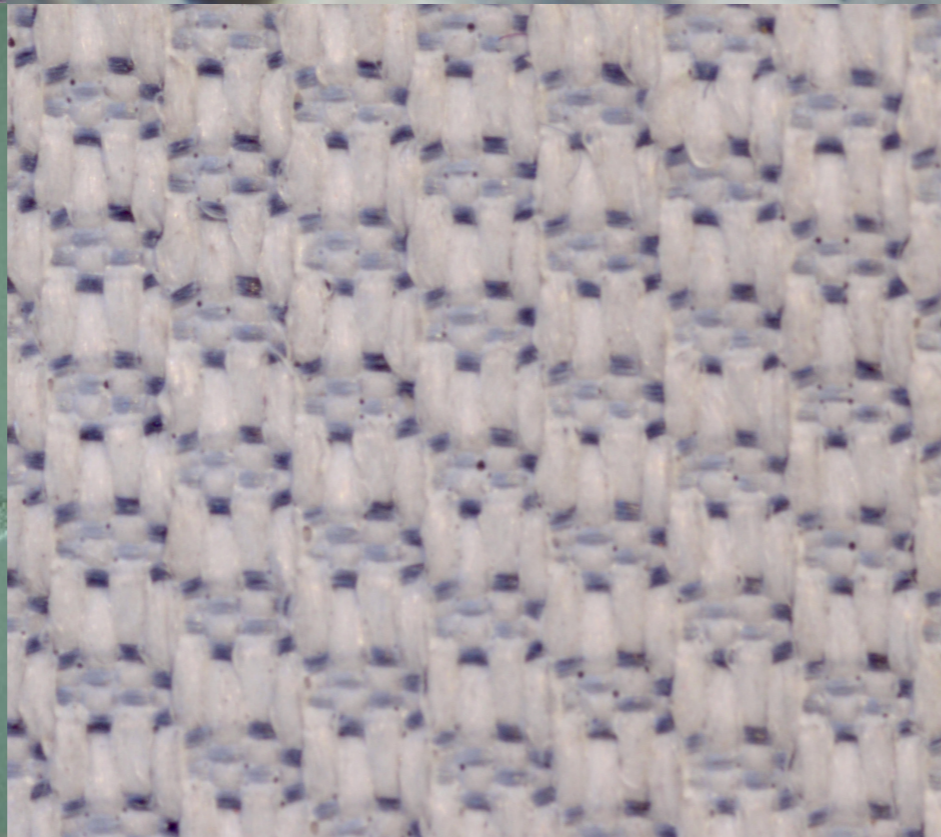
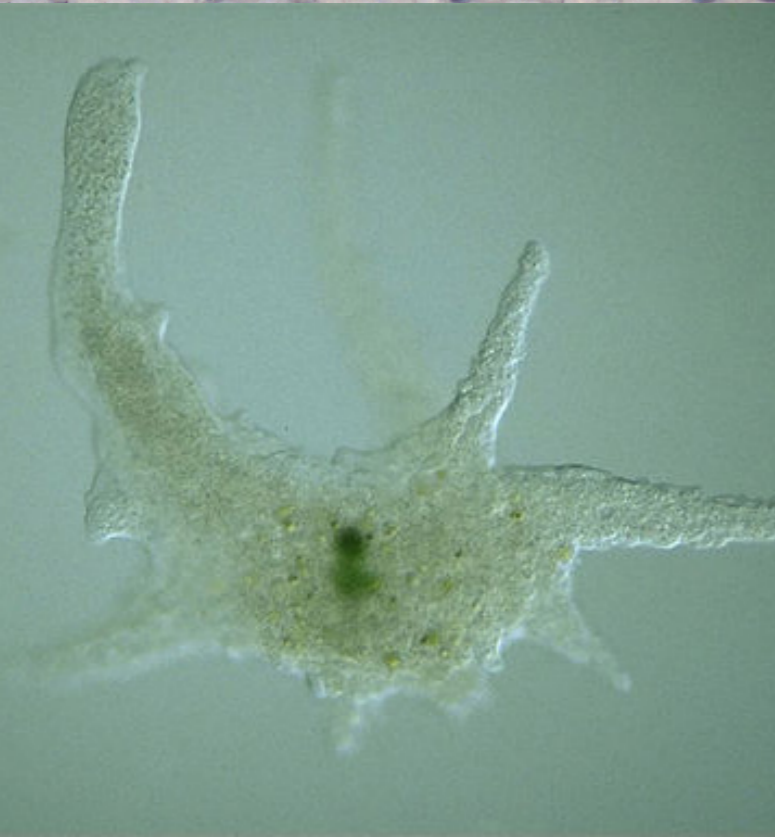
3/28/2017 HV Mag WD Det
1:46:36 PM 15.0 kV 10000x 9.5 mm LFD
10.0µm
Endroit blanc



3/28/2017 HV Mag WD Det
1:34:29 PM 15.0 kV 5000x 9.5 mm LFD
20.0µm
Endroit blanc

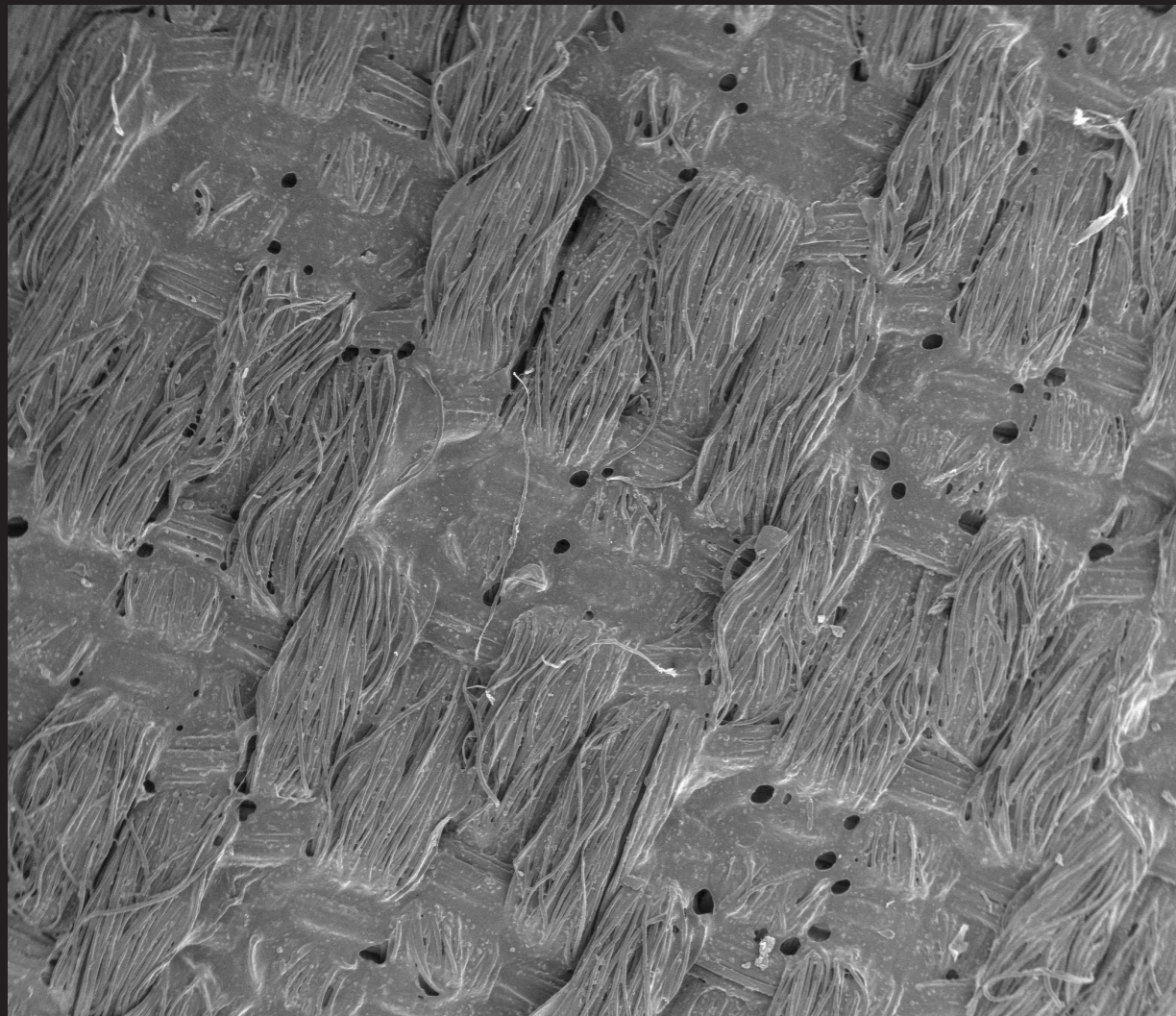


3/28/2017 HV Mag WD Det
1:35:38 PM 15.0 kV 10000x 9.5 mm LFD
10.0µm
Endroit blanc

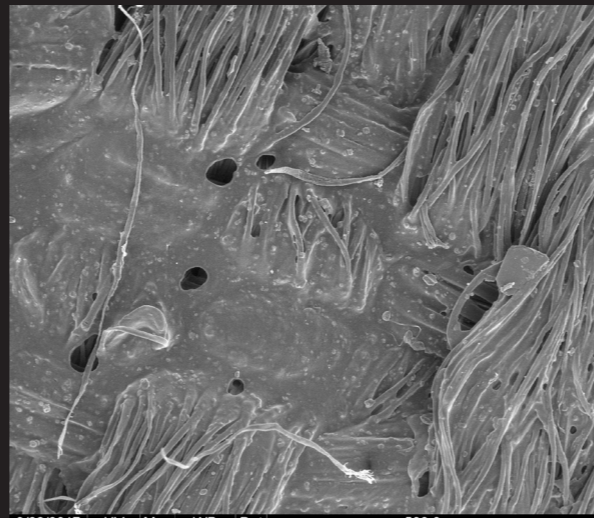


MISE EN RELATION DES OBSERVATIONS MICROSCOPIQUES DU REVERS DU TISSU PRINCIPAL ET D'UN VIRUS.

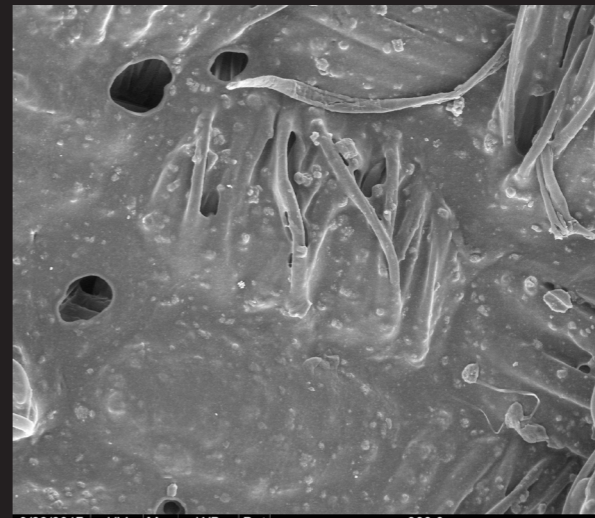
LA RELATION RÉSIDE DANS LA TEXTURE À L'**ASPECT SILICONNÉE** QUE L'ON RETROUVE SUR L'ENVERS DU TISSUS POUR PERMETTRE L'IMPERMÉABILITÉ AINSI QUE L'**ASPECT VISQUEUX** INHÉRENT AU VIRUS.



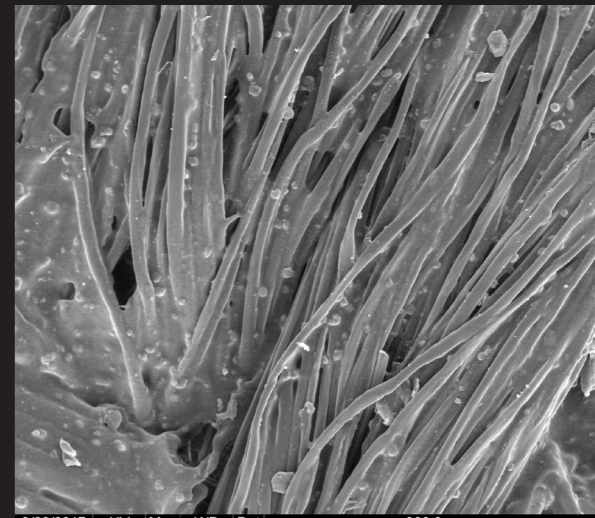
3/28/2017 HV Mag WD Det
1:49:40 PM 15.0 kV 80x 10.0 mm LFD
1.0mm
Envers bleu



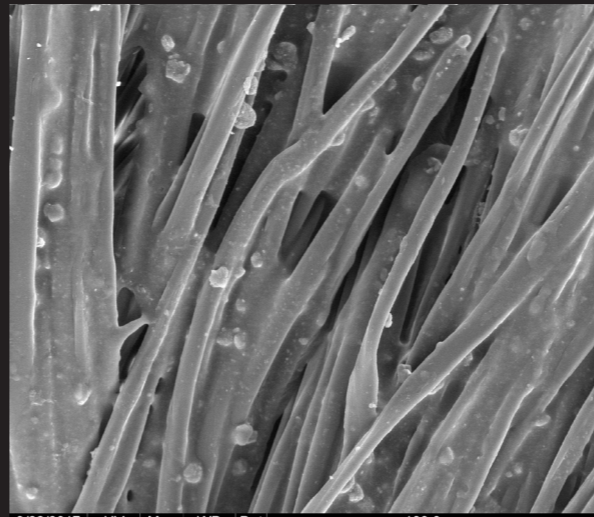
3/28/2017 HV Mag WD Det
1:51:08 PM 15.0 kV 250x 10.0 mm LFD
500.0µm
Envers bleu



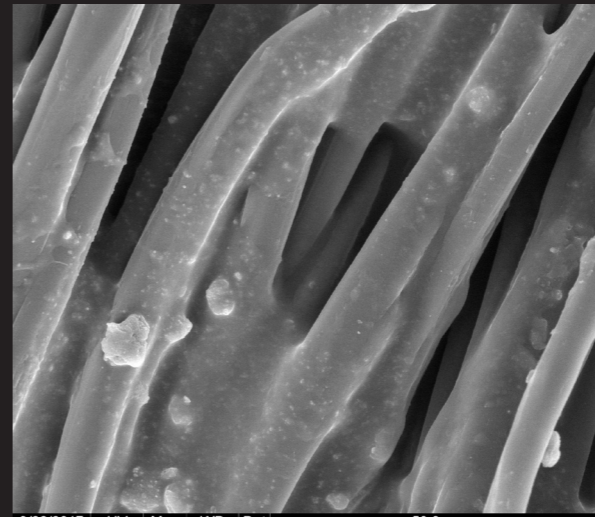
3/28/2017 HV Mag WD Det
1:52:05 PM 15.0 kV 500x 10.0 mm LFD
300.0µm
Envers bleu



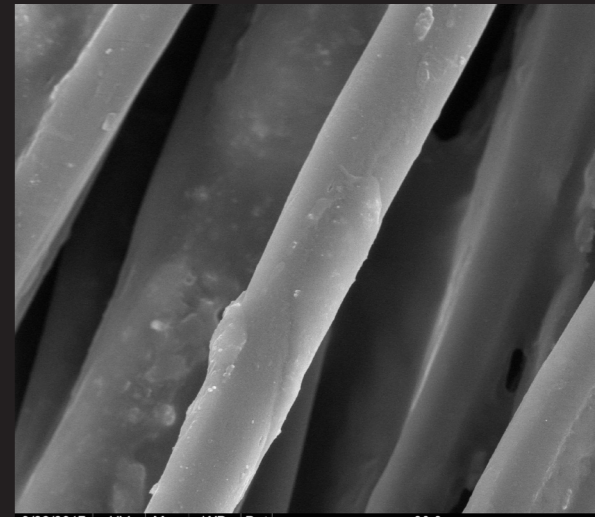
3/28/2017 HV Mag WD Det
1:57:36 PM 15.0 kV 500x 9.9 mm LFD
300.0µm
Envers bleu



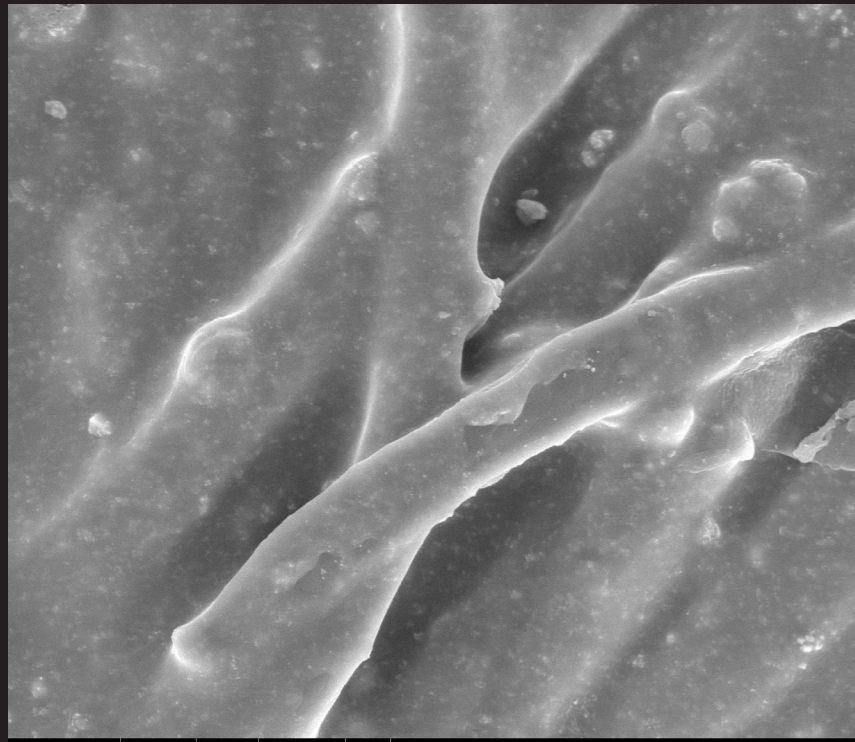
3/28/2017 HV Mag WD Det
1:58:34 PM 15.0 kV 1000x 9.9 mm LFD
100.0µm
Envers bleu



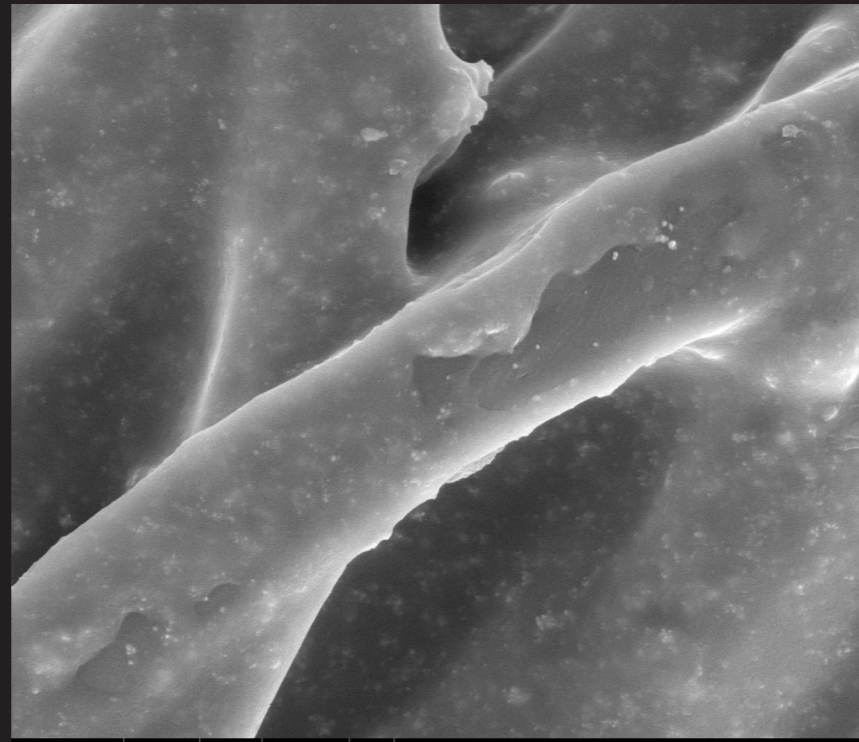
3/28/2017 HV Mag WD Det
1:59:45 PM 15.0 kV 2500x 9.9 mm LFD
50.0µm
Envers bleu



3/28/2017 HV Mag WD Det
2:01:11 PM 15.0 kV 5000x 9.9 mm LFD
20.0µm
Envers bleu



3/28/2017 HV Mag WD Det
1:55:04 PM 15.0 kV 2500x 10.0 mm LFD
50.0µm
Envers bleu



3/28/2017 HV Mag WD Det
1:56:16 PM 15.0 kV 5000x 10.0 mm LFD
20.0µm
Envers bleu



PREMIER ESSAI DE MONTAGE

TROUVER UN MOYEN
DE STRUCTURER

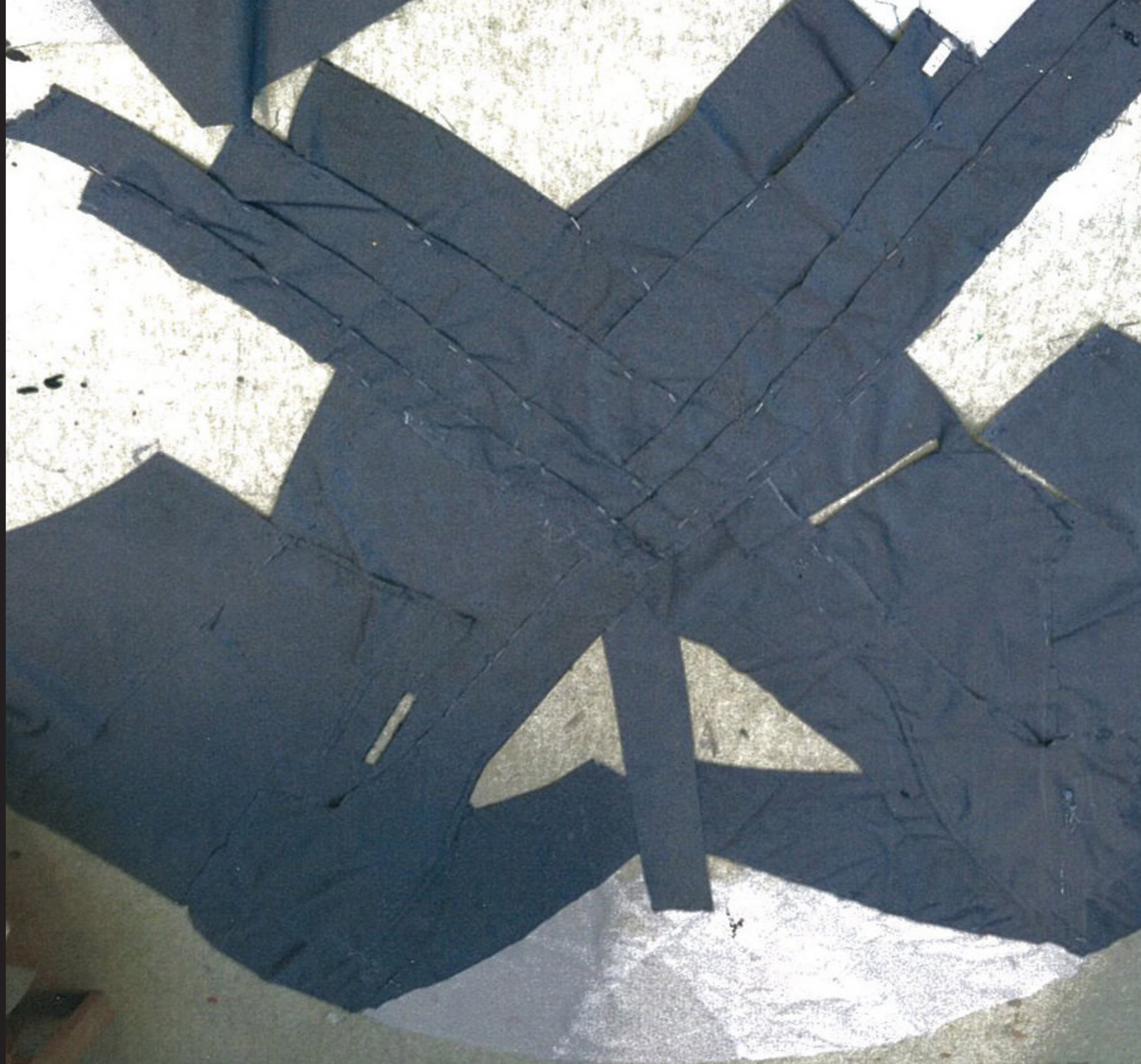


NE PAS UTILISER TOUTES LES COULEURS

USED PIECES: 13 / 30

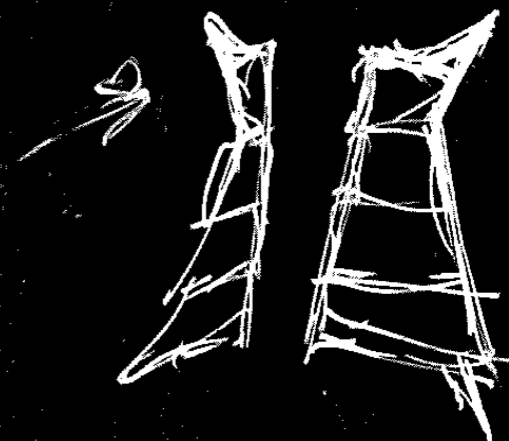
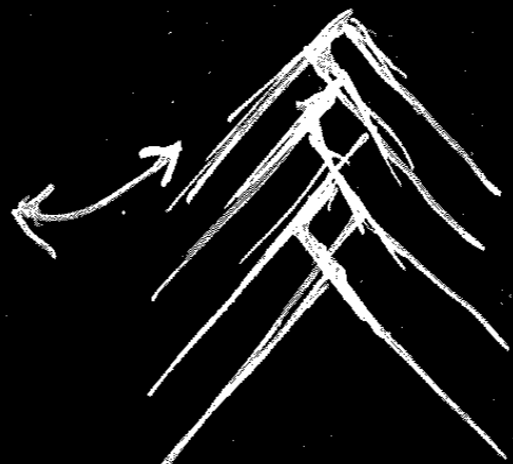
COMPOSER AU SOL

SYMÉTRIE
AXIALE





DESSINS DE RECHERCHES



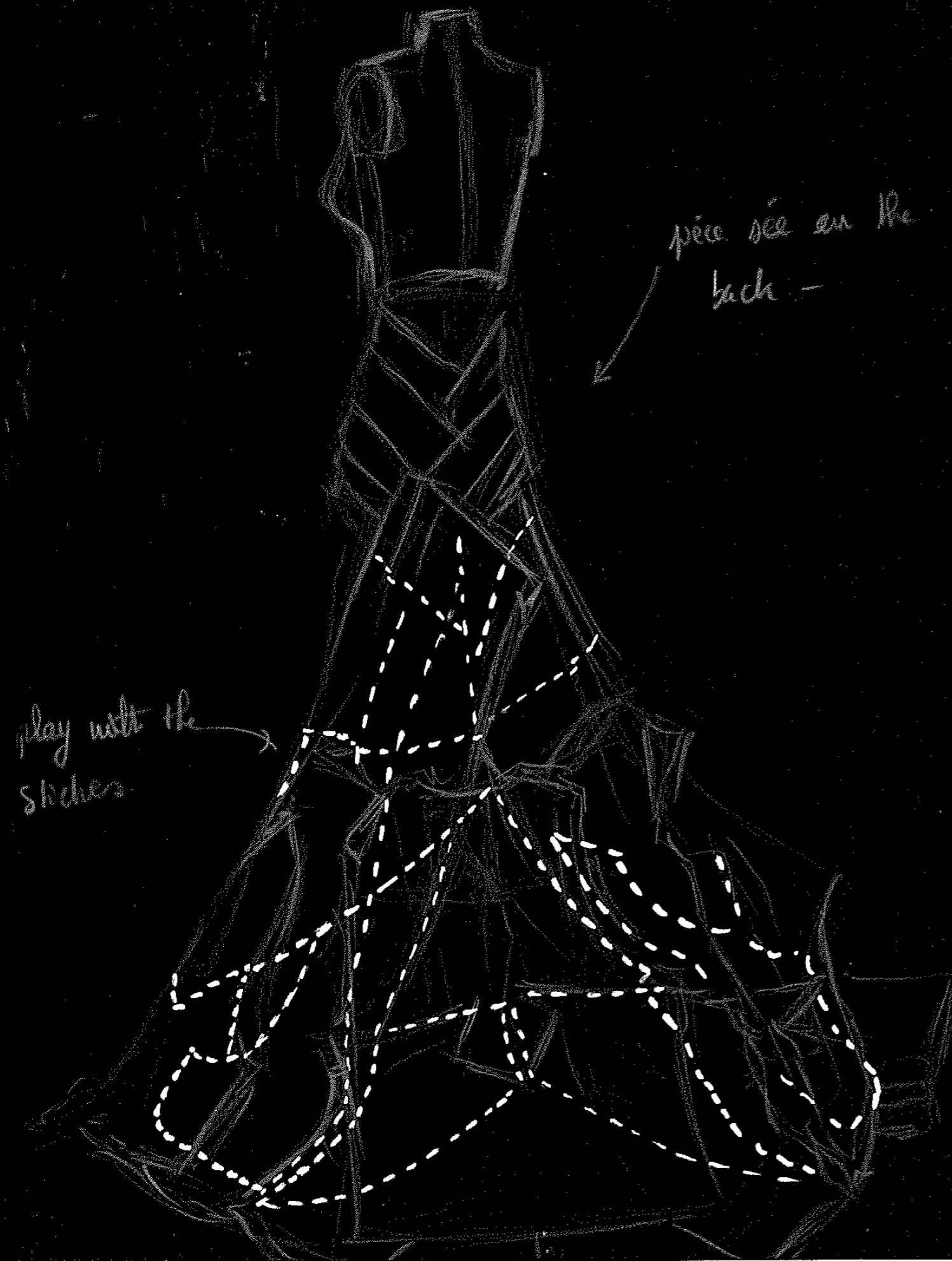


PREMIÈRE SÉANCE
PHOTO POUR SE
RENDRE COMPTE DES
POSSIBILITÉS DU NOU-
VEAU VÊTEMENT



+ PHOTOGRAPHY (3.01.16)

DESSINS
D'OBSERVATIONS
POST-
CONFECTION



J'ai confectionné à partir d'un vêtement de pluie informel et unisex, un ensemble corset et traîne résonnant avec des formes de vêtements féminins du second empire.

Période très accés sur l'ornemental. Ornaments dans les motifs, les tissus et les formes.

Société codifiée de toutes part.

Dans sa forme et sa conception :

- Recomposer des formes plus complexes
- Utiliser différents tissus pour retomber différents.
- Créer une pièce contemporaine reprenant les codes de cette période précise pour questionner l'ornement et sa place aujourd'hui ?

Refaire du formel dans de l'informe ? Se concentrer sur des vêtements informels pour la suite ? Sans ornements, (pull, sweat (attention au nombre de pièces ...), k-way ?)

Collection unisex ?

Questionner le dismentelle-ment du vêtement & sa réutilisation. Utiliser vêtements déjà utilisés, qui ont déjà eu une vie afin de questionner le monde actuel



J'ai choisi ce look parce que :

- j'aime que les couleurs permettent de reconnaître le vêtement de dessus, le trench. Mais dans un **ensemble tailladé qui devient flou** et relie les différents éléments, les différentes épaisseurs de l'ensemble robe chemise + trench

- j'aime moins les découpes très linéaires : en bandes

=> COULEURS QUI STRUCTURENT UN PROPOS

Maison Margiela
Haute Couture/
Spring 2017

Maison Margiela
Ready to wear
2017



J'ai choisi ce look parce que :

- j'ai aimé l'utilisation du revers du vêtement, de la doublure assumée en tant que telle comme une partie intégrante du vêtement final

-j'aime moins l'aspect formel : type sportswear qui répond à la matière

=> UTILISATION DE LA DOUBLURE COMME PART DU TISSU PRINCIPAL



J'ai choisi ce look parce que :

- j'aime l'utilisation d'une forme de robe très connotée rendue moderne/contemporaine grâce au motif décomposé et à la texture/ aux couleurs

- j'aime moins : l'utilisation de motifs et de textiles qui rejoignent la forme de la robe.

=> forme connotée

=> déconstruction du motif/
de la texture

=> superpositions

=> mixte de plusieurs éléments.

Viktor & Rolf
Haute Couture /
Spring Summer
2017

Second Empire
textile orna-
ments



Franz Xaver
Winterhalter
Princesse Tru-
betskaya 1859

NWES GARMENTS
TO DISMENTEL ?
(Febuary)

MAKE A COLLECTION OF
DIFFERENTS SHAPES DE-
TOURNED FROMSECOND
EMPIRE STYLE

RAINING COAT

SWEATSHIRT

PULL

PLEINS DE DETAILS QUI
FORMENT UN TOUT

COLORS ?

MOINS IMPOR-
TANT QUE LA
TEXTURE ET LA
MATIÈRE.

RESTER DANS
UNE GAMME
COLORÉE DEFI-
NIE

GREY - BLACK -
TEXTURES QUI
N'EXISTAIENT
PAS AVANT.



POUR CONTINUER
(Mars)

RECONFECTIONNER UNE
NOUVELLE FORME À PARTIR
DE MES PIÈCES DE PATRON

**UTILISER LES
OBSERVATIONS DE
LA MATIÈRE DANS LA
CONFECTION**

TRAVAILLER PLUSIEURS
TEXTURE EN FONCTION
DES PIÈCES ET **LES
RELIER** APRÈS DANS UNE
STRUCTURE/OBJET ?

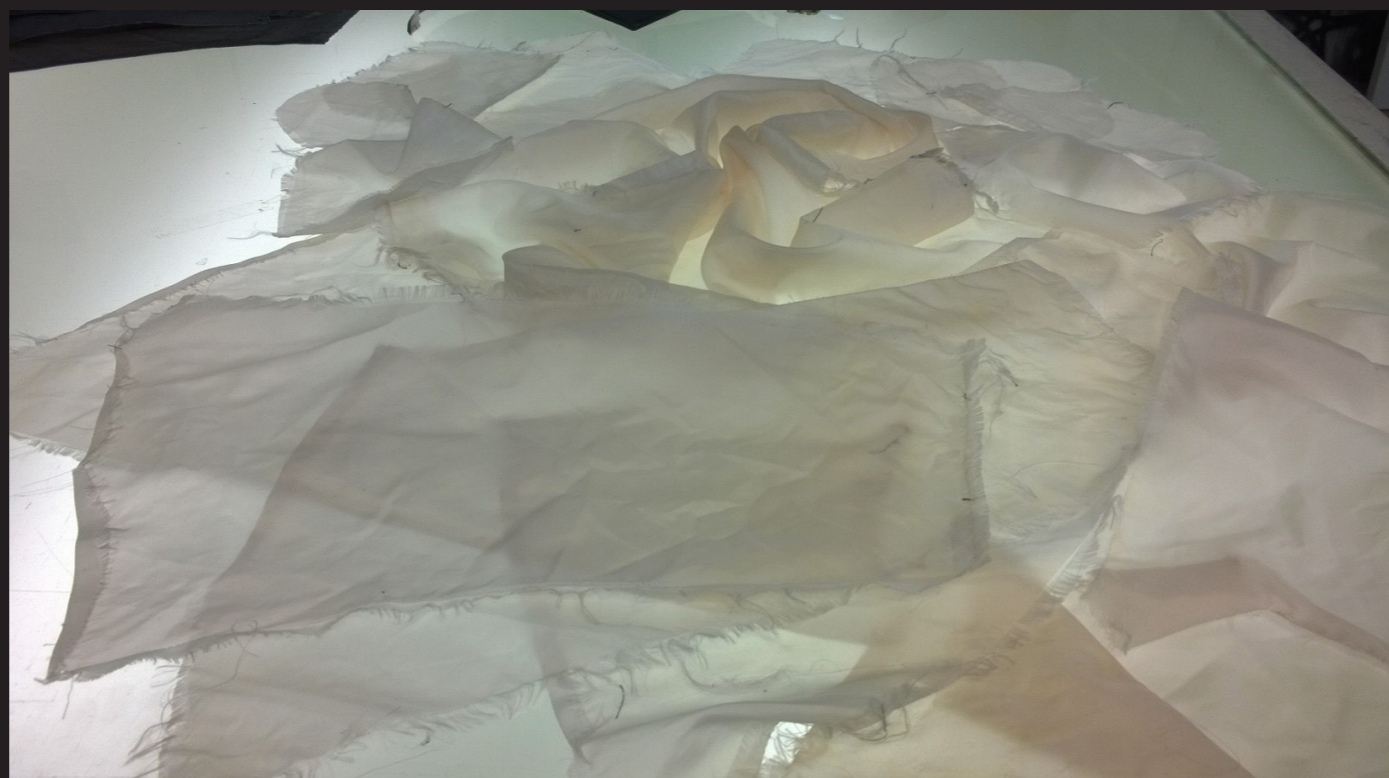
**Partir dans différentes
directions en fonction
de chaque matière et
ses qualités propres, que
l'intériorité/ les fondements
de la matière interroge son
aspect extérieur/ final**

Ne pas penser à l'objet final

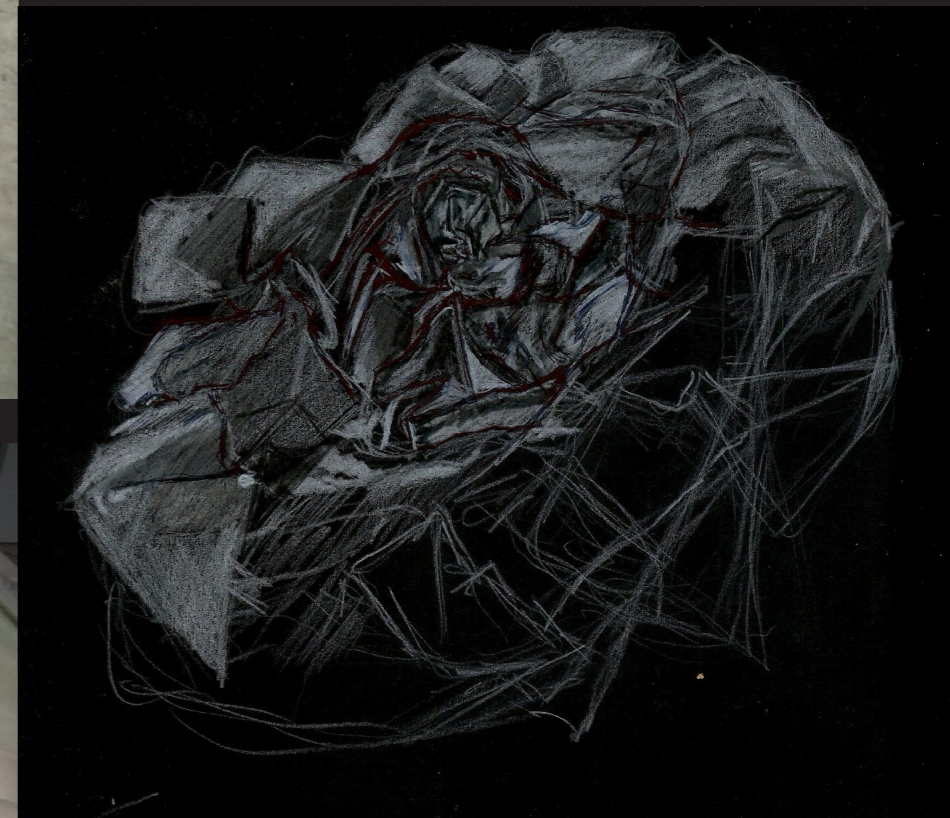
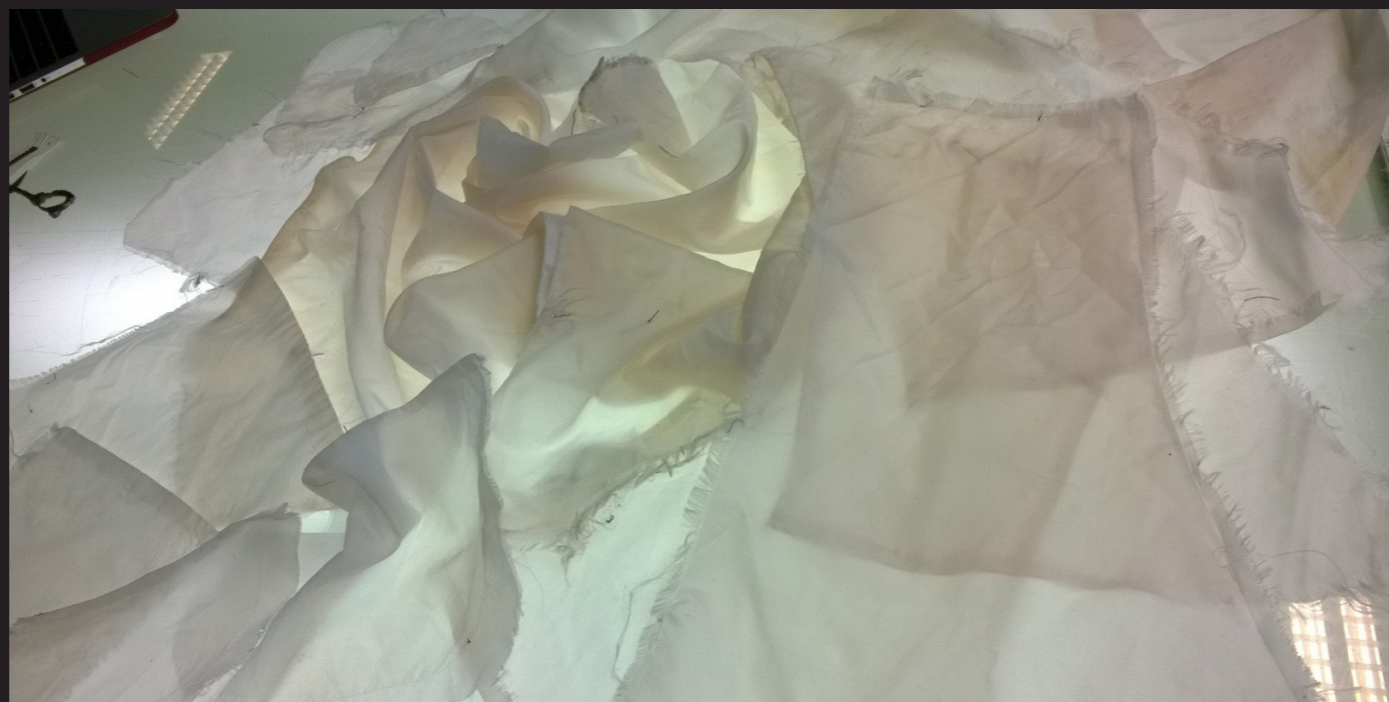
RESEARCHES OF SHAPES
WORK WITH ONLY ONE
MATERIAL



MAKE THE PATTERN
WITH THE SAME ASPECT
(TRANSPARENCY) BUT
DIFFERENT MATERIAL ?



MICROSCOPIC OBSERVA-
TIONS REVEALS THAT IT'S
A REAL STRUCTURE IN-
SIDE SO USE A STRUCTU-
RAL MATERIAL ?



TEXTILE PVC

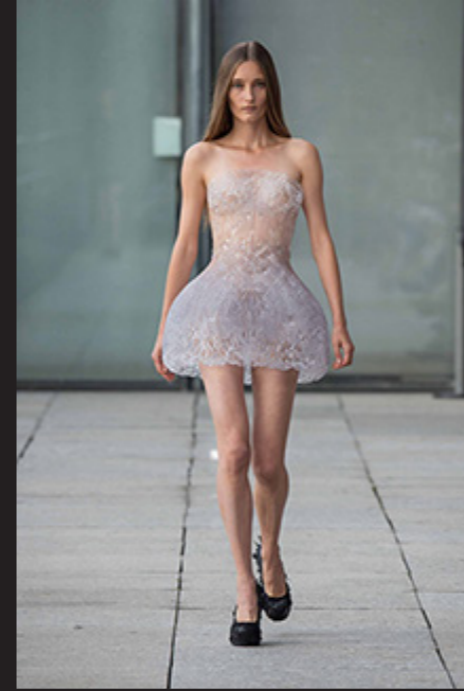
SILICONE

INITAL FABRIC

FIBRE DE VERRE

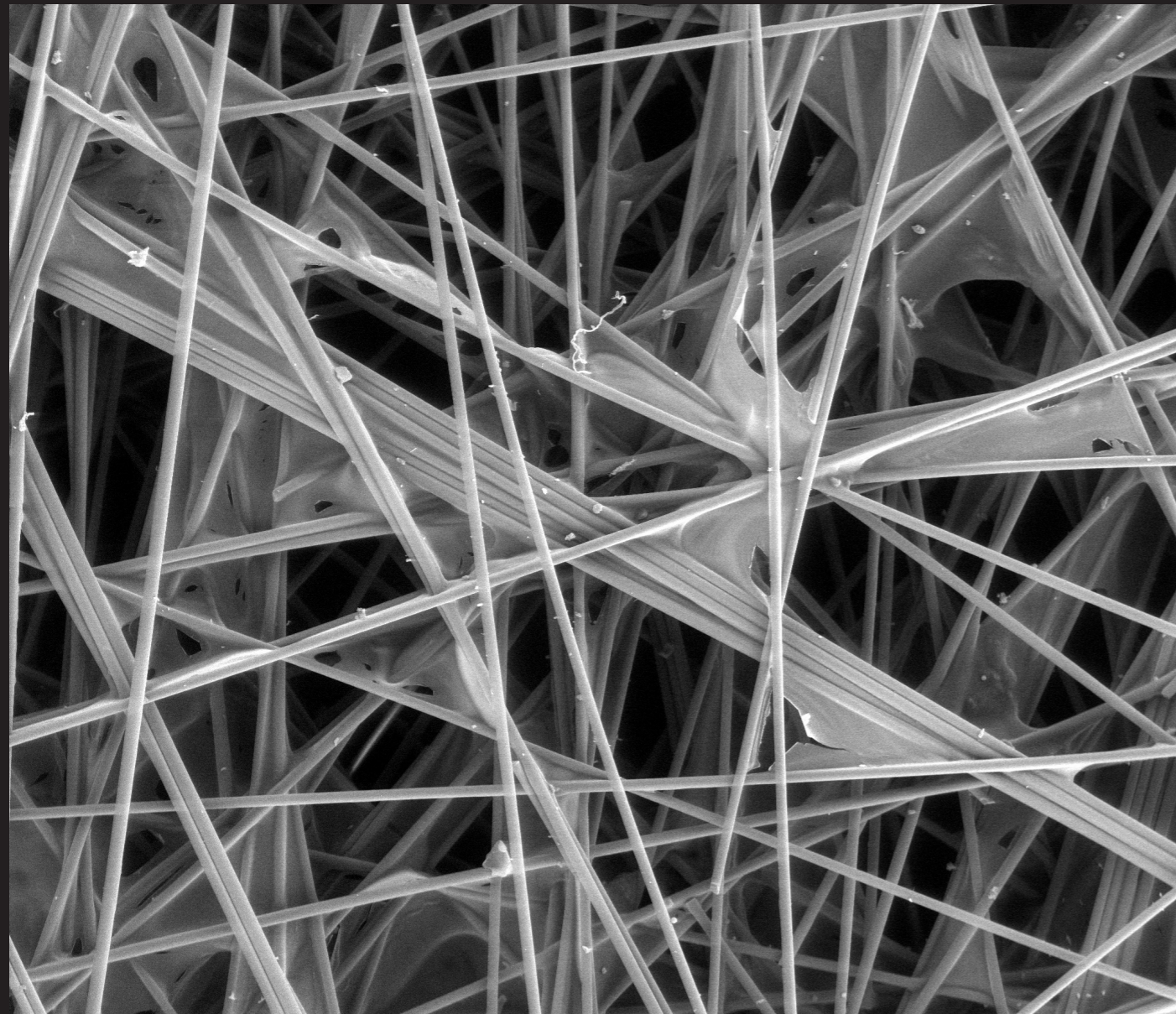


Maike Takeda,
Transparence,
volume, adapta-
tion au corps,
Contemporain
Touches colo-
rées



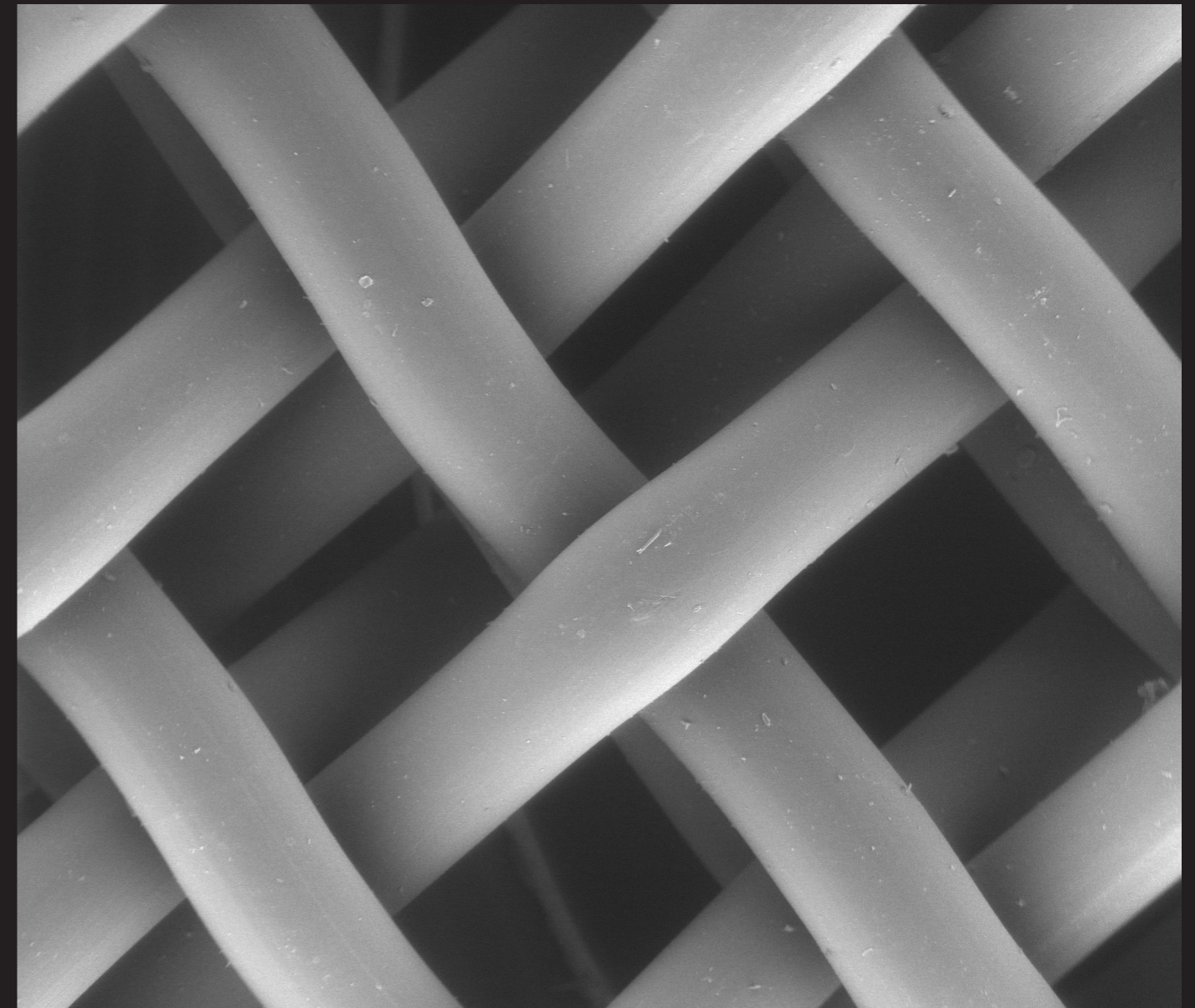
Iris Van Herpen,
Transparence &
Structure
Rapport à une tex-
ture organique
Réaliser ce que
c'est de près





3/28/2017	HV	Mag	WD	Det	500.0µm
3:28:19 PM	15.0 kV	250x	10.0 mm	LFD	Fibre de verre

FIBRE DE VERRE



3/28/2017	HV	Mag	WD	Det	1.0mm
3:37:53 PM	15.0 kV	80x	8.3 mm	LFD	Fibre 3D

TEXTILE PVC